



Saldus Municipality

Travel Guide | turisms.saldus.lv



Accommodation



Sightseeing



Catering



Maps



History of Saldus Municipality

The name of **Saldus** was first mentioned in the Cours Treaty in 1253, whereupon this territory was committed to the governance of the Livonian Order.

From the 15th century for almost four hundred years, Saldus bore the German name **Frauenburg**. The Livonian Order built their stone castle here, and a new settlement appeared around the castle.

In the 16th-17th centuries Saldus and its surroundings were part of the Duchy of Courland and Semigallia. During the reign of Duke Jacob from 1642 to 1682 an iron kiln, a cannon foundry, a linen weaving mill, a leather processing workshop, a sawmill and a potassium works were operating in Saldus neighbourhood. In 1632 a post station was opened in Saldus on Jelgava - Klaipeda post road, which significantly contributed to the development of the settlement.

In the 18th century, at the beginning of the Northern War, the King of Sweden Charles XII came to Frauenburg Castle. During the Northern War, the castle and the settlement were completely destroyed. In 1795 Saldus along with the rest of Courland was incorporated into the Russian Empire.

In 1856 Saldus began to develop as a market town, and in 1917 Saldus received full rights of a town.

Saldus was the first town in Latvia that was freed from the Bolsheviks by O. Kalpaks' Battalion of Latvian National Army on March 10, 1919. On November 25, 1919, the town was liberated from Bermontian Army. After the Freedom Fights, the town expanded and started to develop.

At the end of World War II, the town and its surrounding territories were in the middle of continuous battles in the Courland Fortress. On May 8, 1945, USSR troops entered Saldus and the Soviet occupation began.

In 1991, regaining of independence in Latvia took place and economical and political changes in the life of Saldus and its surrounding area followed.

In 2018, the song "Saldus saule" ("Saldus Sun") composed by Ēriks Ķīgelis and lyrics by Māris Čaklais was officially approved as the anthem of Saldus municipality.

Since 1 July 2021, Saldus municipality consists of two towns – Saldus and Brocēni, and 19 parishes – Blīdene, Ciecere, Ezere, Gaiķi, Jaunauce, Jaunlutriņi, Kursiši, Lutriņi, Nīgrande, Novadnieki, Pampāļi, Remte, Ruba, Saldus, Šķēde, Vadakste, Zaņa, Zirņi, and Zvārde.

Saldus is sometimes quiet, sometimes solitary, but always open. When guests come to visit, Saldus fills their bellies with sweets and cups with coffee. Intended ideas always come true in Saldus. The Art school is filled with children, Oskars Kalpaks' square is filled with flowers, and basketball baskets are filled with basketballs. Saldus is filled with active people.

Saldus is not a town with only one goal. Equally important are both – locals and visitors. Both arts and sports. Both family and community. Rationally, Saldus wants to be a place where market squares and concert seats fill up; emotionally – a place where goals and long cherished dreams come true.



The church and the market square are still in the centre of the town, as they have been for centuries, but the town itself has considerably grown.

Saldus can be discovered as the "sweet" town – watching the brisk activities of the local sweets producers and tasting their products; as the town of Janis Rozentāls – taking a tour to the great Latvian artist's favourite painting locations and visiting the local church he depicted in his diploma painting; as the town of the oldest and richest in tradition rock festival in Latvia – "Saldus Saule" ("The Sun of Saldus"), singing along with the songs until sunrise.

Saldus municipality offers a wide range of leisure activities for adventure seekers, nature lovers, as well as for those who enjoy creative activities or like to get acquainted with the local culture and history. And, of course, travellers will be offered delicious meals, cosy accommodation and relaxing bathhouses.

Content

2. History of Saldus Municipality. Content	15. Collections and Expositions	28.–29. Active Recreation
3. Introduction. Traditional Events	16. Military Heritage	30.–31. Recreation by the Water and Water Tourism Equipment
4.–7. Sightseeing in Saldus	17. Industrial Heritage	32.–33. Catering
8.–9. Sightseeing and Recreation in Brocēni	18.–20. Nature Sites	34.–37. Accommodation. Bathhouses
10.–11. Manors and Palaces	21. Artisanry	38.–40. Maps of Saldus, Saldus Municipality and Brocēni
12.–13. Churches	22.–23. Farms and Gardens	41. Useful Information
14. Memorials	24.–25. Sweets and Tastings	
	26.–27. For School Trips and Tourist Groups	

Traditional Events

- Rozentāls' Running Festival
- Saldus Municipality Festival
- Awakening of Lake Ciecere
- Saldus Municipality Home Cafe Days
- Rock Festival "Saldus Saule"
- Borderland Festival
- Festival "Celebrating Life in Brocēni"
- Festival "Saldus Taste"
- Lāčplēsis Day Procession and Concert at O. Kalpaks' Square
- National holidays, annual festivities, New Year's Eve and other events





1. SALDUS JANIS ROZENTĀLS' HISTORY AND ART MUSEUM

GPS 56.66307, 22.496571

Striķu iela 22, Saldus

Tel. +371 26193485

muzejs.saldus.lv

Saldus Janis Rozentāls' History and Art Museum is on the oldest street in Saldus, Striķu Street. The museum complex consists of several buildings that house the museum's collection, exhibition halls and administration. One of them is a residential building with a workshop designed by Rozentāls himself; the construction of it began in 1899. In 2016, in celebration of the 150th anniversary of Janis Rozentāls, a new exhibition "The Tower of Dreams" opened its doors in the artist's studio. The exposition on the first floor of the workshop is dedicated to Saldus and the surroundings, artist's family and his contemporaries. It shows the locations where Rozentāls' works were created and tells about the artist's biography. The second floor features the artist's original paintings and sketches. The exhibition halls of the museum will always have something fascinating for both art lovers and history explorers. The museum also hosts wedding ceremonies and offers activities for newlyweds. The museum shop has a selection of souvenirs.



2. ROZENTĀLS' STONE

GPS 56.667723, 22.507573

Kalsētas Park, near Jelgavas Street bridge

The picturesque Ciecere river has inspired many artists of Saldus, but only Janis Rozentāls has his own stone on the banks of the Ciecere. It is located near the bridge. The stone has been moved from its original location and part of it was split off. The artist often sat on the stone and painted. The stone is pictured in his paintings "By the Stream" and "Winter Landscape".

3. MOTIFS OF J. ROZENTĀLS' PAINTINGS ON BUILDINGS

GPS 56.666310, 22.495367;

GPS 56.664559, 22.491547;

GPS 56.666095, 22.489047

Honouring the 150th anniversary of Janis Rozentāls, which was celebrated in 2016, the walls of several buildings in Saldus were decorated with murals based on paintings by J. Rozentāls. The murals created by artist Sandra Strēle can be seen at 1 Tūristu Street, 5 Lielā Street and 12 Avotu Street.



4. BRONZE SCULPTURES OF CHARACTERS FROM J. ROZENTĀLS' PAINTING

GPS 56.666392, 22.492774

Kuldīgas iela 2, Saldus

Honouring the 155th birthday of Janis Rozentāls, seven life-size bronze sculptures depicting characters from his diploma painting "After the Service" were placed on the steps at St. John's Evangelical Lutheran church. The sculptures represent various social classes, including Rozentāls' parents – his mother Lavīze and his father Miķelis. It is known that the artist spent many Sundays by the church, sketching the local people. The author of the sculptures is sculptor Sandis Aispurs.



5. REPRODUCTIONS OF PAINTINGS BY JANIS ROZENTĀLS

GPS 56.666363, 22.492743;

GPS 56.667593, 22.504954;

GPS 56.667725, 22.509679;

Reproductions of paintings by the famous Latvian painter Janis Rozentāls can be seen in several places in Saldus. In front of St. John's Evangelical Lutheran church – a reproduction of the painting "After the Service", on the banks of the Ciecere River near Kalsētas Park – "Washerwomen", in Kalsētas Park near the bridge – "Study. Willows".

Saldus fills with impressions and memories



6. SILDUS HILLFORT AND SIGN "SILDUS"

GPS 56.669663, 22.509390

Saldus Hillfort, which is located near Lake Saldus, testifies to the ancient Curonian time in Saldus. Many legends remain about the hillfort, most of them about the sweet life inside the hill. The Bijļu Hill scenic viewpoint provides the best views of the hillfort and the panorama of Saldus. Everyone is welcome to take a photo at the sign "Saldus".

7. FOUNTAIN "A DROP OF HONEY"

GPS 56.664045, 22.492042

The fountain "A Drop of Honey", created by sculptor Kārlis Īle, born in Saldus, adorns a square named after a poet and former resident of Saldus – Māris Čaklais, who has compared the town to a "drop of honey in Kurzeme bowl". The fountain consists of two horizontal honeycombs connected by an impressive drop of honey. In 2021, an interactive sculpture by Egils Mednis dedicated to the poet was installed here – a washing bowl on a chair playing poems by Māris Čaklais and songs with his lyrics.

8. KAPELLERS' HOUSE

GPS 56.665003, 22.494586

Strīķu iela 7, Saldus. Tel. +371 26567762

Built in 1857 by pharmacist Eduard Kapeller, the building has become a community centre, where various exhibitions, workshops, small concerts and events take place. Groups, especially students of all ages, are invited to participate in a variety of creative workshops and activities. Souvenirs of Saldus can be purchased here. A potter's workshop is located in the basement, and there is a kiln in the garden, where the pottery is fired.

9. BUILDING OF SILDUS MUSIC SCHOOL AND ART SCHOOL

GPS 56.666518, 22.489114. Avotu iela 12a, Saldus
Tel. +371 26422658, +371 63822365

The building of Saldus Music School and Art School received the Grand Prix at Latvian Architecture Award in 2013. The architects have created surprisingly high quality architecture for everyday use, which offers user-friendly space and enjoyable and pleasant environment for all. Various exhibitions are always displayed in the school building, and great concerts take place in the acoustic concert hall.



10. KALNSĒTAS PARK AND "PATH OF ART, MUSIC AND LOVE"

GPS 56.667760, 22.509901

Kalnšētas landscape park was planted on the picturesque banks of the Ciecere River by Baron von Recke, the owner of Kalnamuiža manor at the end of the 19th century. On the steep slope of the park, the Grave of Love is located. Legends related to this place tell about the tragic love of baron's daughter Johanna and manor servant Karl. There is an open-air stage between the manor house and the river. The park is a popular place for recreation and entertainment, where concerts, festivals and other events take place in the summer.

The "Path of Art, Music and Love" is an approximately 5 km long route of connected walking trails in the Kalnšētas Park. It was created to introduce visitors to the history of the park and two great natives of Saldus – painter Janis Rozentāls and musician Ēriks Ķīģelis. There are several information boards at the most popular places in the park, displaying facts and stories about historical events and notable people.

11. CIECERE NATURE TRAIL

GPS 56.665592, 22.490067

The trail meanders along the Ciecere River from the Kuldīgas Street bridge to the Saules Street bridge. Part of the trail was built as a boardwalk and is also suitable for visitors with prams. It passes the largest playground of the town. The trail is surrounded by beautiful gardens, and the area is especially picturesque during summer time.

12. OSKARS KALPAKS' SQUARE

GPS 56.665898, 22.493110

The former market square is a popular place for concerts and festivities. On March 10, 1919, Saldus became the first Latvian town liberated by Oskars Kalpaks' battalion. As a witness of that time, a memorial stone was placed here and the square was named after Oskars Kalpaks. A symbol of the identity of Saldus municipality "Saldus fulfills" - the special letter "S" – can be seen in the square. The Clock in the square was created inspired by Janis Rozentāls' passion for Art Deco and Jugendstil.



13. LAKE SILDUS AND BEACH

GPS 56.671988, 22.506954

The picturesque Lake Saldus is situated at the foot of several hills and Saldus Hillfort and is close to the town centre. The lake covers 11.9 hectares. It has a beach with a separate swimming area for children, two beach volleyball courts, a playground, and a summer café.

14. SILDUS CHILDREN AND YOUTH CENTRE

GPS 56.665526, 22.491909. Lielā iela 3b, Saldus

The building was built in the 19th century as the Friendship Association centre. Artist Janis Rozentāls was an active member of the association and designed stage decorations for theatre performances. Saldus Children and Youth Centre has been located in this building since 1992.

15. BRIDGES OF SILDUS

GPS 56.667407, 22.503604

The banks of the Ciecere river in Saldus are connected by 14 bridges. The oldest bridge was built before World War II near the former rectory (at the intersection of Kalnšētas Street and Jelgavas Street). It has withstood serious challenges during the war – heavy machinery of both armies crossed this bridge. In 2023 the second oldest bridge in the city - the bridge on Kuldīgas Street was given a new appearance. There are nine bridges for pedestrians. When you cross them for the first time, you should make a wish, and it will come true – if you truly believe it!

Sightseeing in Saldus

Sightseeing and Recreation in Brocēni



19

Historically, Brocēni is an industrial town and still boasts one of the most modern cement plants in Europe. However, there are also many noteworthy sights and recreational spots, which might be overlooked. Make a stop in Brocēni and let it surprise you!

Brocēni town is attractive due to its picturesque surroundings – forests, lakes and scenic places for recreation in nature. Brocēni is situated next to Lake Ciecere, which is perfectly suited for rowing and other water sports. One of the regional water sports centres is lo-

cated here, and there is a rowing course on the lake. Various recreational opportunities await in Brocēni – the adventurous can enjoy fun activities at the ropes course in the forest park, the creative ones have the option to create their own ceramic item in the local pottery workshop, and the secrets of Lake Ciecere can be discovered while taking a tour on the boat “Zezer”. Along with the stadium, a gym and a sports hall, Brocēni sports centre also features an indoor ice-skating rink, which allows you to enjoy ice-skating even in the middle of summer.

16. BROCĒNI FOREST PARK AND ROPES COURSES

GPS 56.669262, 22.564266
Tel. +371 24933055

The forest park is a great place for walking – the trails are approximately 3km long. There is a rhododendron garden in the forest – visitors can enjoy more than 60 blooming rhododendrons in early summer and a rope course for active recreation with more than 20 sections of varying difficulty. It is located at a low height, approximately 1 meter, and is accessible to everyone at any time.



16

17. LAKE CIECERE BEACH AND WALKING TRAIL

GPS 56.678569, 22.563087

At the beach in Brocēni you can enjoy peace and beautiful surroundings, and also various activities, as there are volleyball and basketball courts, a skatepark, a children's playground and outdoor fitness equipment. There is a public beach, which has a floating dock creating a safe swimming area, changing cabins, toilets and benches. A walking trail starts at the beach – it is approximately 1 km long, takes you along the shore of Lake Ciecere and ends just before Brocēni forest park. There are several picnic areas and benches by the trail.



17



18

18. BOAT “ZEZER”

GPS 56.68692, 22.56121. Tel. +371 26858777
E-mail: kugiszezer@gmail.com

During the summer, the boat offers public, individual and corporate tours on Lake Ciecere. It is also a great way to celebrate important moments in life. During the tour, visitors will find out many interesting facts about the lake, the history of the area, and Brocēni town. Audio guide is available in Latvian, Lithuanian, Russian and English. The boat dock is located down the steps from the parking area by the A9 road.

19. “PRINCESS OF WATER LILIES”

GPS 56.680172, 22.566427

The sculpture was made within the framework of Latvia's Centenary Celebration Programme during the plein air “Industrial Art in Brocēni” in 2018. It is located behind the culture centre, near the public swimming area. The author of the sculpture is Agnese Rudzīte-Kirillova.

20. “BLACKFOLKPOTTERY” POTTER'S WORKSHOP

GPS 56.68138, 22.56740. Lielcieceres iela 7, Brocēni
Tel. +371 29895905; www.blackfolkpottery.com
E-mail: blackfolkpottery@gmail.com

Traditional black ceramics items are made and can be purchased here. Visitors can participate in creative activities and create their own clay masterpieces.

21. “CIECERES ŪDENSROZES”

GPS 56.674996, 22.564525. Krasta iela 14
Tel. +371 29255877; E-mail: solveiga.dzene@inbox.lv

Located near the public swimming area, “Cieceres ūdensrozes” offers recreational water equipment rental – a rowing boat, SUP boards, a pedal boat, inflatable water walking ball, and also activities like motor boat rides, water skiing, and inflatable tube rides on Lake Ciecere. The owner Solveiga Dzene is a professional landscape gardener and gives visitors tours of her beautiful garden, provides advice on how to choose plants and teaches about the principles of garden design.



20



21



22

22. “SPORTIVE AQUA”

GPS 56.678955, 22.562285. Next to the public beach in Brocēni. Tel. +371 24227242; E-mail: info@sportive.lv
www.sportive.lv

The largest inflatable water park in Kurzeme region is located on Lake Ciecere. With over 30 obstacles, this 4000m² large floating water park will test your strength and coordination skills in the most fun and challenging way possible. Children must be 6 years old and above to visit the water park.

23. TERRACE “SPĀRE”

GPS 56.670225, 22.56100. Tel. +371 26858777

During the summer season, the cozy terrace “Spāre” will be waiting for those who enjoy delicacies, hot beverages and beautiful moments of relaxation at the port of Lake Ciecere near Brocēni Mežaparks. The offer includes delicious cakes from a local pastry shop, the opportunity to enjoy the beautiful landscape in the lake house and take a excursion on the boat “Zezer” also from the pier at the port of Lake Ciecere.

i **BROCĒNI TOURIST INFORMATION POINT**
Lielcieceres iela 3, Brocēni, LV-3851
Tel. +371 22777103



24

24. JAUNAUCĒ MANOR PALACE

GPS 56.444226, 22.690027. Jaunauce parish
Tel. +371 26014296, +371 28349411

www.jaunaucespils.lv. Guided tours are available.

Jaunauce manor palace, surrounded by the manor park (7 ha) is a national monument of Classical architecture, built for count Medem. Restoration work has been carried out in the oval hall with the only authentic dome painting of Classicism style in Latvia, the gallery, the dining room and the study. The largest collection of Empire style stoves (7 stoves) from the beginning of the 19th century has also been restored. In the 19th century, the palace housed the most impressive col-

lection of artworks in Courland Governorate. Nowadays, this collection can be seen using digital technology in the augmented reality exhibition "Vārti" – when scanning markers, visitors can see paintings, busts and historical dance in 3D. There is an exposition of nobility clothing in the palace, where each costume features a true story from the life of baron Ropp's family in Jaunauce manor. Exposition "The School Desk" consists of various desks from the time the building housed Jaunauce school, and there is still an authentic physics and chemistry lab from the Soviet times. In baron's wine cellar visitors can taste Jaunauce manor wine.

25. KALNAMUIŽA MANOR

GPS 56.666723, 22.514610. Kalnsētas iela 24, Saldus
The manor is located in Kalnsētas park, on the banks of the Ciecere river. It was built in 1872 and also includes servants' quarters, a park and a barn. The first owner of the manor was Georg von Recke, who named the property "Berghof", which means "the manor on the hill". Nowadays, Saldus Technical School is located there.

26. VADAKSTE MANOR

GPS 56.373047, 22.748247

Vadakste parish. Tel. +371 25619406

Vadakste manor has been the property of baron Bistrām's family since the 16th century. The new manor house was built in 1911-1914 in Neoclassical style. A hall with a fireplace in Art Nouveau style, a wide wooden staircase and glazed tile stoves in the oval hall have been preserved. The manor is a popular location for summer camps.

27. JAUNMUIŽA MANOR AND PARK

GPS 56.829320, 22.401858

Jaunlutrīņi parish. Tel. +371 29115267

The manor was built at the beginning of the 19th century. A park (2.2 ha) featuring foreign tree species was planted around the manor house during the time of prince Liven. Noteworthy is the door of the manor granary, which, along with the park, is a national architectural monument. The former servants' house is the birthplace of Colonel Jukums Vācietis.

28. LIELEZERE MANOR

GPS 56.40387, 22.362088

Ezere parish. Tel. +371 22122713

The manor, which is a national architectural monument, was built in the 18th-19th centuries. The manor house has been altered several times and adapted to house a school – Ezere Elementary school is located in the building. The tomb of baron von Nolcken's family is located not far from the manor. An impressive, 4.2 m tall rock can be seen in the manor park - "Vadakstes valdnieks" ("The Ruler of Vadakste").



25



26

29. STRIĶI MANOR AND PARK

GPS 56.598224, 22.512095. Zvārde parish

Tel. +371 26033305, +371 26177794 (guide)

Striķi manor was built at the beginning of the 19th century. Several buildings including the granary, the main house and the gardener's house, as well as the manor park (4 ha) can still be viewed. Nowadays, the local culture centre is located in the manor house.

30. REMTE MANOR

GPS 56.739545, 22.694236. Remte parish

Tel. +371 29391836, +371 63846890, +371 29321105 (guide)
The first manor house was built in the 18th century and can still be seen opposite the new palace, built in 1800 in Berlin classicism style by count Karl Medem and later modernized. For many years, the local elementary school was located there. Unfortunately, the building was damaged by fire twice, therefore the interior was destroyed. The manor house is surrounded by a large landscape park and is a popular location for weddings and summer camps.

30





31

31. SALDUS ST. JOHN'S EVANGELICAL LUTHERAN CHURCH

GPS 56.666742, 22.492643
Kuldīgas iela 2, Saldus
Tel. +371 28665089 (tour guide),
+371 29167336 (administration)

The first stone church in Saldus was built in 1615, the construction was funded by Duke Wilhelm. It was rebuilt in its present location in 1737, and at the end of the 19th century re-designed by Wilhelm Neumann and expanded. The church houses unique art monuments: an organ made by K.A. Hermann – a famous expert from Liepāja, a pulpit in Mannerism style and a 19th century altar with an altar painting by J. Doring. The well-known Latvian artist Janis Rozentāls has depicted the church in many of his paintings at the turn of the 20th century. His diploma work “After the Service” is particularly notable. In 2021, seven life-size bronze sculptures depicting characters from this painting were placed on the steps of the church.

32



32. SALDUS STS. PETER AND PAUL'S ROMAN CATHOLIC CHURCH

GPS 56.662032, 22.501370. J. Rozentāla iela 16, Saldus. Tel. +371 25146300

The existence of a Roman Catholic church in Saldus was first mentioned in 1461. However, the parish was established in 1923. They had twice unsuccessfully attempted to build a catholic church in Saldus – in 1940 and in 1947. The construction of the new Sts. Peter and Paul's church began in 1999. The church was designed by architect Aigars Andersons from Saldus and built with money raised through contributions by worshippers and other well-wishers from Latvia and abroad. The parishioners have also invested a lot of effort to build the church. The construction work was finished in 2008.

33. SALDUS MARTIN LUTHER'S EVANGELICAL LUTHERAN CHURCH

GPS 56.659491, 22.489190. Skrundas iela 25/27, Saldus. Tel. +371 22020683, +371 26334045

The need for another Lutheran church appeared when the second Evangelical Lutheran parish was founded in Saldus in 1930. The church was designed by architect P. Dreimann using Gothic and Romanesque forms and built in 1934 with the support of the parish members' donations. The altar painting “Jesus Christ Blesses the Fields” was painted by artist E. Dolmann. In 1995, the parish was given the name of Martin Luther.

34. ORTHODOX CHURCH OF THE LORD'S APPEARANCE

GPS 56.662466, 22.497297
Striķu iela 26, Saldus
Tel. +371 26537911

The church was built at the end of the 19th century. The local Russian Orthodox congregation strengthened and grew during the Russian government period before World War I. Notable icons of the 19th century – “The Resurrection of Christ”, “Christ the Ruler” and “The Virgin of Kazan” - can be viewed at the church.

35. ST. GREGORY'S EDUCATION CENTRE

GPS 56.660342, 22.489392. Lielā iela 26, Saldus
Tel. +371 20216655. www.gregors.lv

St. Gregory's Education Centre was founded in 1995 and initiated by archbishop J. Vanags. Although the school's identity is Lutheran, it is open for students of all Christian denominations.

36. GAIĶI EVANGELICAL LUTHERAN CHURCH

GPS 56.773123, 22.541871. Gaiķi parish
Tel. +371 26048675

The church is an architectural monument of national importance, which was built in 1658, and the tower was added in 1684. The church was fully renovated in 1817. Its pew paintings are especially remarkable.

37. RUINS OF ZVĀRDE AND ĶĒRKLIŅI CHURCHES

GPS 56.561057, 22.632516 (Zvārde church);
GPS 56.519039, 22.670902 (Ķērklīņi church)
Zvārde parish. Tel. +371 63846151,
+371 26177794 (guide)

During Soviet time, most of the territory of Zvārde parish was given to the Soviet Air Force to create a military training ground. Impressive witnesses of the past are left in this area: Zvārde and Ķērklīņi churches, and Rīteļi cemetery were all destroyed as they were located in the middle of the firing ground. Open-air services are still held at the ruins of Zvārde church.

38. RUINS OF GRIEZE CHURCH

GPS 56.414328, 22.219344
Ezere parish. Tel. +371 22316912, +371 24243912

The church was built near the Lithuanian border, where the Vadakste river flows into the Venta river. The first church was built here at the end of the 16th century. The present church building was built in 1769 and is currently being renovated. The famous Latvian sculptor Kārlis Zāle was baptized in this church in 1888.

39. GRĪVAIŠI EVANGELICAL LUTHERAN CHURCH

GPS 56.425043, 22.431659
Ezere parish. Tel. +371 29180556

Grīvaiši Lutheran church, cemetery and tavern form a complex of buildings typical for Latvian countryside of the 17th -19th centuries. The pulpit in Mannerism style with wooden carvings from the 17th century has been preserved.

40. PRIEDULA EVANGELICAL LUTHERAN CHURCH

GPS 56.370693, 22.84559
Vadakste parish. Tel. +371 26317749

Priedula Lutheran church was built at the end of the 16th century. It is remarkable due to its 17th century interior items. Priedula medieval cemetery with its unique limestone grave monuments is located next to the church.

41. LUTRIŅI EVANGELICAL LUTHERAN CHURCH

GPS 56.812156, 22.384114
Jaunlutriņi parish. Tel. +371 25544107

This is the fifth building of Lutriņi church, which has survived to this day. The construction of the church was completed in 1827. The altar and altar paintings from the beginning of the 19th century, as well as ancient ceremonial objects have been preserved.

42. NĪGRANDE EVANGELICAL LUTHERAN CHURCH

GPS 56.489889, 22.08895
Nīgrande parish. Tel. +371 26458880

Nīgrande Lutheran church (1775) is the oldest building in the parish. The bells and the tower cockerel are from the 18th century.



36



38



39

43. KALNI ST. AGATHA ROMAN CATHOLIC CHURCH

GPS 56.445016, 22.122539
Kalni, Nīgrande parish. Tel. +371 26312282

In 2005, bishop Vilhelms Lapelis consecrated the church foundation. The construction was completed in 2009. The altar was designed by local artist Maija Eņģele and made by local craftsman Aivars Birznieks.

44. REMTE EVANGELICAL LUTHERAN CHURCH

GPS 56.745291, 22.686334
Remte parish. Tel. +371 26493373

The church was built in 1780. In 1945, it was set on fire by Soviet soldiers celebrating their victory over Germany. Around 1970, the church walls were adapted and used as a warehouse. Since 1992 services are held again in the church. The original altar painting has been replaced with a sculpture – a gift from sculptor Arta Dumpe, native to Remte.



46

46. BIRTHPLACE OF JUKUMS VĀCIETIS

GPS 56.829720, 22.403894
Jaunlutriņi parish. Tel. +371 29115267
In the building where colonel of Latvian Riflemen Jukums Vācietis was born, an exposition on his family, life and achievements is displayed. In front of the house there is a monument to him created by sculptor Lea Davido-va-Medene.

47. MEMORIAL PLAQUE TO ĒRIKS ĶIĢELIS

GPS 56.665364, 22.49423
Striķu iela 5, Saldus
In 2015, a memorial plaque to the popular Latvian musician and composer Ēriks Ķiģelis was unveiled in Saldus, Striķu street 5. The musician lived in this house for 20 years. A tit is depicted on the plaque – this symbol was chosen because the song “The Tit”, written by Ē. Ķiģelis, is legendary. The plaque was created by Egils Mednis, with the support of Saldus Rotari Club and the public.

48. SYNAGOGUE SQUARE

GPS 56.662889, 22.493428. Miera iela 4a, Saldus
In 1869, the synagogue of Saldus was consecrated here. In 1941, the World War II and the genocide carried out by the Nazi Germany wiped out the Jewish community and the synagogue in Saldus. In 2020, the Synagogue square was created here to commemorate the Jewish community of Saldus.

49. MEMORIAL STONE TO WRITER JĒKABS JANŠEVSKIS

GPS 56.468133, 22.04165. Nīgrandes parish
A memorial stone dedicated to Jēkabs Janševskis is located near his native homestead “Kalna Krīcmaņi”. The writer has vividly described the life and the characters of the local people in his novels.

50. BIRTHPLACE OF WRITER IRMA GREBZDE

GPS 56.382660, 22.641235
Ruba parish. Tel. +371 26609770
Reņģe railway station was opened at the same time as Jelgava-Mažeikiai railway, but the present building was built in 1935. Writer Irma Grebzde was born in this station. A memorial plaque to the writer is placed on the wall of the building.

51. MEMORIAL ENSEMBLE TO THE DEPORTED “KRUSTA CEĻŠ” (“WAY OF THE CROSS”)

GPS 56.445286, 22.123024. Kalni, Nīgrande parish
The memorial ensemble was unveiled in June 2009. It consists of four freight wagons – each for a different deportation period. The wagon roofs symbolize houses. In the middle of the ensemble there is an altar and a cross. The memorial ensemble was created by local artist and an expert on local history Maija Eņģele.

52. JANIS ROZENTĀLS’ NATIVE HOMESTEAD “BEBRI”

GPS 56.718002, 22.442915. Saldus parish
The beautiful surroundings of the native homestead may have shaped J. Rozentāls into an outstanding artist. There is a memorial plaque at the building, which tells about the prominent artist’s connection to this place.



45

45. MEMORIAL SITE “AIRĪTES”

GPS 56.677942, 22.156008
“Airītes”, Zirņi parish. Tel. +371 22017465; karamuzejs.lv
A memorial site was established at the place of death of the commander of the first Latvian Independent Battalion, Colonel Oskars Kalpaks and three other officers. The museum of Colonel Oskars Kalpaks is located opposite the memorial site.

53. EXPOSITION ON HISTORY OF CINEMA AND PHOTOGRAPHY AT “ZĪKI” FARMSTEAD

GPS 56.668727, 22.352014
“Zīki”, Zirņi parish. Tel. +371 29265183
Andris Bušinskis, an enthusiast of cinema and photography history, has created a remarkable exposition of cinematography and photography equipment, which tells about the development of these devices and technologies since their beginning.

54. COLLECTION OF HUNTING TROPHIES

GPS 56.443041, 22.100701. “Briežsili”, Nīgrande parish
Tel. +371 29299330, +371 29449245
Raimo Jansons, a passionate hunter, has created an impressive collection of hunting trophies, which is displayed in a purpose-built log house. The collection features all kinds of trophies from Latvia and other countries – even Namibia. Wild game tastings are offered.

55. COLLECTION OF HISTORIC VEHICLES

GPS 56.612212, 22.507894
“Retrokniņš”, Zvārde parish. Tel. +371 29163603
A remarkable collection of historic vehicles can be viewed in Zvārde parish. The collection has been created by enthusiast Jānis Dobelis and includes cars, trucks, and also motorcycles.

56. LOCAL HISTORY EXPOSITION IN NĪGRANDE MANOR GRANARY

GPS 56.485235, 22.091502. Nīgrande parish
Tel. +371 26497699
Part of the local history exposition is dedicated to the life and works of Latvian writer Jēkabs Janševskis. There is also an exposition on the traditional manor life and manor interior. A separate exposition is dedicated to the Soviet period.

57. VADAKSTE HISTORY REPOSITORY

GPS 56.373047, 22.748247. Vadakste manor, Vadakste parish. Tel. +371 25619406, +371 26611439
Vadakste manor houses the local history collection of Vadakste parish. Local antiques, items from the Soviet time, as well as historical records of the parish and the local school are displayed in five rooms.

58. LOCAL HISTORY EXHIBITION OF SALDUS PARISH

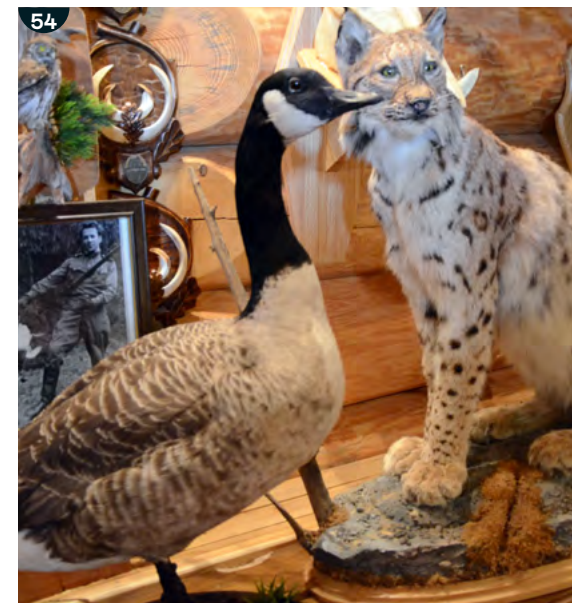
GPS 56.695363, 22.449631. Saldus parish, Druva Culture Centre. Tel. +371 29145725
This exhibition was created in 2003. It includes information on the history of Saldus parish, antiques, and a permanent painting exhibition – a gift from local artists.

59. GAIĶI LOCAL HISTORY REPOSITORY

GPS 56.78588, 22.56368
“Eglāji”-10, Vecgaiķi, Gaiķi parish. Tel. +371 29484178
Gaiķi local history repository contains information on the history of Gaiķi parish – history materials about the local farmsteads, school and people, items from various times, photographs and other historical records.



53



54



55



60

60. OSKARS KALPAKS' MUSEUM

GPS 56.67833, 22.15538. "Airītes", Zirņi parish
Tel. +371 22017465. karamuzejs.lv

The museum, dedicated to the memory of the first Commander in Chief of Latvian Armed Forces, Colonel Oskars Kalpaks, is a historical monument of national importance. Everyone is invited to visit the museum building and the exhibition that reflects the personality of Colonel Oskars Kalpaks and his activities during World War I and the Latvian Liberation Struggle. In 2024, the Civic Education and Historical Understanding Center was also opened here. It tells about the cultural history, architecture, material culture and public life of our country in an interactive way. Next to the museum is an open-air exhibition – the largest in the Baltics full-size replica of a NATO combat outpost.

61. EZERE LOCAL HISTORY REPOSITORY "MUITAS NAMŠ" ("CUSTOMS HOUSE")

GPS 56.402689, 22.369470. "Ezeres muitas punkts", Ezere parish. Tel. +371 29475438

Ezere local history repository is located in a historically significant building where on May 8, 1945, the act of surrender of Nazi German army units encircled in "Courland pocket" was signed. It is believed that World War II in fact ended in Ezere. The exposition of the repository covers the history of Ezere parish from the ancient times to the present day. There is also a new, interactive exhibition "The End of War in Courland", which depicts the symbol of the end of World War II – the surrender of Courland.

62. FORMER TARGET FIRING GROUND OF THE SOVIET ARMY

GPS 56.564371, 22.625483. Zvārde parish

During Soviet time, most of the territory of Zvārde parish was transferred to the Soviet Air Forces to establish the largest (24.500 ha) firing ground in Latvia. In Soviet times, it was a restricted area for civilians. The remains of the former air raid control tower can still be seen there.



63

63. SALDUS GERMAN SOLDIERS' CEMETERY

GPS 56.613338, 22.459421
"Tērpji", Novadnieki parish. Tel. +371 63807443

The largest cemetery of reburied soldiers in the Baltics. Investigation of war burials and the reburial of German soldiers have been taking place since 1997. Currently, approximately 26 000 German soldiers have been reburied at the cemetery, but the work is still ongoing, as all of the burial sites have not been explored yet. From May to October, an informative exhibition about the battles in Courland is displayed in the memorial room. A register of the fallen soldiers is available.



62

64. "AIRĪTE" RAILWAY STATION

GPS 56.705738, 22.172394. Zirņi parish
Tel. +371 29503503. By prior arrangement

The station was built in 1935 according to a standard design as one of the stations of the Glūda-Liepāja railway. It once served as a large transit centre, but over time, its significance diminished, and since 2001 trains no longer stop here. Nowadays, the station is open to visitors. Its 20th century interior is partly restored and there is a comprehensive exposition dedicated to railway history in Kurzeme region, containing historical artefacts. The owner Pēteris Stumburs will share captivating stories about the history of the station and the exposition.



64

65. SLUICE OF EZERE WATER MILL

GPS 56.404911, 22.365085. Ezere parish

The maple-leaf shaped sluice on Ezere mill pond was put into operation in 1982. A sluice in this shape is rare in Latvia. It looks especially impressive in spring and autumn, when the water level is high.



65

MACHINERY ROAD tehnika.saldus.lv

"Machinery Road" is a unique tourist attraction that stretches for 20 kilometres. Several monuments of agricultural machinery are exhibited along the road Saldus-Kuldīga. They are freely accessible to visitors, and there are information boards next to them.

66. Crawler tractor TDT-55

(GPS 56.682617, 22.470802) Manufactured in 1991. This tractor is used in logging and management – for hauling and loading timber, as well as for soil loosening, road construction work. It is designed to work in difficult conditions: on steep slopes, in wet and difficult-to-access places.



67

67. Steam Locomobile

(GPS 56.692809, 22.447017) The locomobile manufactured in the beginning of the 20th century was installed near the mechanical workshops in Druva to promote work traditions.



70

68. Claas Matador Gigant Combine Harvester

(GPS 56.707406, 22.423127) The combine harvester was manufactured in Germany in 1968. It can be seen between the villages Druva and Namiķi.



72

69. Tractor with Ditch Digging Equipment

(GPS 56.717488, 22.391349) The tractor Stalince 80 (Сталинец-80) T 100 with a ditcher is located at the turn-off to Namiķi. It was made after World War II on a tank base.

70. Tracked Tractor and Peat Harvester

(GPS 56.725417, 22.383451) It was one of the most popular tractors in Soviet time. Made in 1989 to work in bogs, it has a wider chassis and wider tracks.

71. Tracked Dragline Excavator

(GPS 56.744099, 22.377164) The excavator EO-3211E-1 was manufactured in 1990 at the excavator plant PO "Taseks" in Tashkent, and it was intended for use in digging trenches, canals, and ponds.

72. Portable Threshing Machine

(GPS 56.808938, 22.285115) This threshing machine was manufactured at the beginning of the 20th century by "Ransomes, Sims & Jefferies Limited" in England and it was used for grass seed threshing. The machine could be transported using six to eight horses and it was powered by a steam engine or a stationary engine.

Fill yourself with the power of nature in Saldus municipality!

Nature Sites



73. LAKE CIECERE AND OBSERVATION TOWER

GPS 56.656997, 22.555093
"Saulrieti", Ciecere parish

Lake Ciecere (277 hectares) is a proglacial lake and the most expressive example of this type of lake in Latvia. In some places the lake is reminiscent of a river. There is one large island (14 ha) in the lake – Ozolu sala (Oak Island), which is a nature reserve, a territory of "Natura 2000". The Ciecere river flows out of the lake. The 18.4 m tall observation tower is located next to Lake Ciecere, 5 km from Saldus and 6 km from Brocēni. It offers stunning views over the lake and the surrounding area. The tower is built on an artificial hill and the total height is 30 metres. There is a picnic area near the tower.

74. NATURE RESERVE "ZVĀRDE" AND NATURE PARK "ZVĀRDE FOREST"

GPS 56.539922, 22.578199. Zvārde parish

Zvārde Nature Reserve is located in the eastern part of Zvārde parish and is home to nesting sites of many rare bird species. White-tailed eagle, red kite and land-rail can be seen here.

75. NATURE RESERVE "SĀTIŅI PONDS" AND BIRD WATCHING TOWER

GPS 56.636639, 22.334608. Novadnieki parish
Tel. +371 29165144

The nature reserve with 30 fish ponds was created to protect birds, as the ponds attract many bird species during nesting and migration season - both common Latvian water birds as well as rare and protected birds in Europe. A 9.8 m high bird watching tower is located near one of the ponds. Part of the territory is managed by Sātiņi fishery – tours can be organized by prior arrangement.

76. THE VENTA RIVER

GPS 56.487850, 22.103209

The largest river in Kurzeme, Venta, crosses Saldus municipality in the south. It enters Latvia in Ezere parish near Grieze church, which is a popular starting point for boating trips. The river is suited for relaxed and peaceful paddling while enjoying the beautiful surroundings. There are several well-equipped picnic and resting sites on the riverbanks in Nīgrande parish.



77. SATIŅI MILL POND

GPS 56.803015, 22.534999. Gaiķi parish

Sātiņi mill pond (10.2 ha) was created on the Imula river. There is a swimming area with a beach volleyball court, a picnic area with a campfire site, and a pier. Vigantu grand oak (5.4m) is located nearby. It used to be an ancient cult tree, hence the inscription "Upuru ozols" (sacrificial oak).

78. THE CIECERE RIVER

GPS 56.668040, 22.510976

Ciecere is a 51 km long right-bank tributary of the Venta river. The river flows out of Lake Ciecere and meanders through Saldus for 6 km creating a large green area in the town centre. Several small artificial waterfalls have been created on the river in Saldus town.

79. LAKE REMTE

GPS 56.740274, 22.682163. Remte parish

Lake Remte (75.5 ha), which is the source of the Viesata river, is situated near the Remte manor park. A neo-Gothic Swimming tower built in the 19th century can be seen by the lake. Lake Remte has a swimming area.

80. PAKUĻI WATER RESERVOIR

GPS 56.679924, 22.338496. Zirņi and Lutriņi parishes
Tel. +371 22006407

Pakuļi water reservoir (172.4 ha) was created on the Ciecere river, close to Lašupe. There are several holiday houses that offer recreational water-based activities. Only licensed fishing is permitted.

81. EZERE MILL POND AND SUSTE POND

GPS 56.404975, 22.371980

Ezere parish. Tel. +371 22088757

Ezere mill pond was created on the Ezere river at the end of the 19th century and is the largest water body in Ezere parish (13.1 ha). The nearby Suste pond (8.2 ha) is popular for fishing and leisure activities. Well-equipped picnic areas with campfire sites are located by the ponds. Only licensed fishing is permitted.

82. VADAKSTE WATER RESERVOIR

GPS 56.370161, 22.757853. Vadakste parish

The water reservoir (110 ha) was created on the Vadakste river. It has become a popular place for recreation and fishing.

83. ZAŅA MILL POND

GPS 56.456893, 22.181203

Zaņa parish. Tel. +371 22497127

The first owner of the mill was baron Nolcken, whose name is inscribed on the mill sluice wall. Planks for fishing have been set up at the pond and boat rental is available. Only licensed fishing is permitted.

84. MELDZERE HOLLOW ROCK

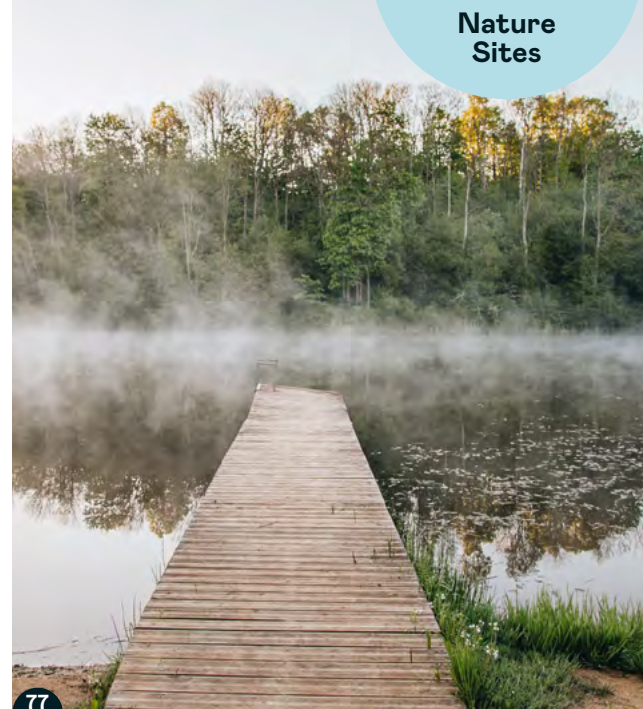
GPS 56.498283, 21.958083. Nīgrande parish

Meldzere hollow rock is an ancient cult rock. Local people have passed on the information about its meaning from generation to generation until the 20th century. It is no longer in its original location, because locals have moved it to prevent the rock from being destroyed.

85. BALOŽI PALM PINE-TREE

GPS 56.487246, 22.349644. Kursiņi parish

This unique pine-tree is the only one in Latvia that has gained the shape of a palm-tree naturally.



86. KALNI NATURE TRAIL

GPS 56.458858, 22.115859. Kalni, Nīgrande parish

The trail is 2.3 km long. It starts at Kanavišķi water reservoir and meanders along the Losis river all the way to the Venta river. Signs and information stands are placed by the trail and tell about the interesting sites located nearby – the railway embankment for the transportation of brown coal, the blue clay river bank and the grand rock of Airīši. There are several rest areas, wooden planks, bridges and stairs. Campsite "Ievas" is located by the trail.

87. KALNZIEDNIEKI GRAND OAK

GPS 56.811656, 22.283559. Ošenieki, Jaunlutriņi parish

The largest oak-tree (circumference 7.9 m) in Saldus municipality is located near Ošenieki village centre and can be seen from the road.



88

88. REMTE MANOR PARK

GPS 56.737391, 22.696470

Remte parish

Remte manor is surrounded by a large (26 ha) landscape park, planted at the beginning of the 19th century. The park features various tree species, a pond and a system of canals. Walking trails (2.3 km) will take you to the "Hunting Tower", where the count used to have breakfast, the "Bear Hut", where the bear cubs were kept, "Gazebo", "Torture Chamber" and the man-made "Love Island". It is recommended to begin the walk at the Love oak (circumference 5.3m), which is popular with newlyweds. There is a sensory path near the manor house. The pathway includes plenty of different elements designed to stimulate your senses.



89

89. LIELEZERE MANOR PARK

GPS 56.403389, 22.362450. Ezere, Ezere parish

The scenically valuable park between Ezere Manor and the Vadakste river covers 19.7 hectares. It was created in the second half of the 19th century. There are nice walking paths in the park, which will let you enjoy being in nature and see various historical sites. The remarkable 4.2m tall grand rock "Vadakstes valdnieks" ("Ruler of Vadakste") can be viewed here. It was rolled up from the Vadakste river by manor's servants. The name of the estate's baron von Toll and the years "1845 – 1855" are inscribed on the rock. According to legends, these numbers indicate the duration of rolling up the rock to its present location or the time period, when the park was planted.



90

90. VADAKSTE MANOR PARK

GPS 56.373101, 22.748882. Vadakste, Vadakste parish

Vadakste manor is surrounded by a picturesque park planted in the 18th-19th centuries and featuring trees and shrubs of rare species. A walking trail along the Vadakste river will take you to the Vadakste water reservoir, where one must use the opportunity to set one foot in Latvia, the other one – in Lithuania. A lilac garden has been created in the park in recent years. 62 lilac trees have been planted at the moment, and the garden is expanded every year.



91

91. JAUNAUCĒ MANOR PARK

GPS 56.443843, 22.689370. Jaunaucē parish

Tel. +371 26014296, +371 28349411 (tour guide)

www.jaunaucespils.lv

Jaunaucē palace is surrounded by a 19th century landscape park (7 ha). It is one of few parks in Latvia that have been reconstructed correctly - its original layout and plants have been preserved to this day. The park and manor buildings show clear, unspoiled spatial structure and artistic quality. Clearings, groups of trees and shrubs, and the pond recreate the 19th century feel. After the reconstruction, the park has regained its pathways, bridges, pergolas, benches and the former tennis court. The park serves as a place for recreation, a tourist destination, and a beautiful and diverse educational tool for people interested in culture and nature. Guided tours in the park are available.

92. POTTER'S WORKSHOP "SAULES LIETAS"

GPS 56.665003, 22.494586

Striķu iela 7, Saldus. Tel. +371 26760148

Pottery workshop "Saules Lietas" is located in the Kappellers' house. Here you can buy ceramic items and jewellery created by artisan Dita Zagorska and learn how to work with clay, create traditional straw ornaments "puzuri" or make jewellery. There is a wood-fired kiln in the garden.



92

93. DRUVA HANDICRAFT CENTRE

GPS 56.695504, 22.449631

Vienības iela 15/17, Druva, Saldus parish

Tel. +371 29145725

At Druva handicraft centre, you can try different types of handicrafts, as well as see the masterpieces of local craftspeople.

94. CERAMICIST IVETA BESERE

GPS 56.627452, 22.476713

"Klenciši", Novadnieki parish. Tel. +371 26359500

At the pottery studio you can order and purchase ceramics with deer antler elements.

95. CERAMICS WORKSHOP "KLAPATAS"

GPS 56.546488, 22.210359

"Klapatas", Pampāji parish. Tel. +371 26305478

Ceramicists Aleksandra Gūtmane and Inga Gūtmane invite visitors to try their hand at making a ceramic item, as well as to purchase their ceramics.

96. CERAMICIST VALDIS JAUNSKUNGS

GPS 56.444457, 22.12347

Kalni, Nīgrande parish. Tel. +371 29352651

Beautiful and useful crockery is made in the pottery studio.

97. CREATIVE STUDIO "CLAY HEAD"

GPS 56.665833, 22.497129

Tūristu iela 4, Saldus. Tel. +371 25100059

Ceramic bowls, mugs, plates and many other ceramic items are made and sold here. The studio provides creative workshops for small groups to create and paint their own ceramic pieces.

98. "BLACKFOLKPOTTERY" CERAMICS STUDIO

GPS 56.681385, 22.567401

Lielcieceres iela 7, Brocēni

Tel. +371 29895905, www.blackfolkpottery.com

Natural wood-fired pottery, made in a traditional technique without using the pottery wheel. The studio is located in the centre of Brocēni town and also offers creative workshops.

99. WOOD CRAFTSMAN ALVIDS PUPŠIS

GPS 56.404970, 22.360387

Centra iela 8, Ezere, Ezeres parish

Tel. +371 29420230

Offers to purchase various wooden products or make individual orders. The craftsman's works can also be seen in the Lielzere Manor Park and elsewhere in Ezere. In the workshop you can also get acquainted with the creation process of wooden products.



100

100. TEXTILE ARTIST BAIBA RĪTERE

GPS 56.69405, 22.49882. "Austrumi", Saldus parish

Tel. +371 26470849. www.baibatextileart.lv

The beautiful hand-woven tapestries have gained recognition in many exhibitions in Latvia and abroad. At the textile studio visitors can see and purchase the tapestries and place custom orders. The artist demonstrates the weaving process and offers creative workshops.

101. FOLK APPLIED ARTS STUDIO "SALDUS"

GPS 56.669568, 22.490017

Kuldīgas iela 3, Saldus. Tel. +371 26553947

Weaving, macramé and other craft classes. Collection of samples of traditional skirt fabric with patterns of Saldus area. Fabric for national costume skirts can be ordered here.



102

102. DEER GARDEN AT THE RECREATION CENTRE "JUKU DZIRNAVAS"

GPS 56.864370, 22.495544

"Juku Dzirnavas", Šķēde parish

Tel. +371 28666600. www.jukudzirnavas.lv

Guests of "Juku Dzirnavas" and visitors have the opportunity to admire one of the most beautiful wild animals in Latvia – red deer. Next to the recreation centre, they are kept in a large, specially adapted enclosed area.

103. PEONY GARDEN AT "LAPENIEKI"

GPS 56.8226396, 22.3454773

"Lapenieki", Jaunlutriņi parish

Tel. +371 29707343

Sandra Medne has created an impressive peony garden at the farmstead "Lapenieki". Currently, over 240 varieties of peonies grow here. In early summer, visitors can see the beautiful collection in full bloom.



103

104. FARM "ZIĶI"

GPS 56.668727, 22.352014

"Ziķi", Zirņi parish. Tel. +371 29265183

The farm offers exciting, informative and educational stories about ostriches, pheasants and cows, as well as the opportunity to see them. It is also possible to visit their exhibition of cinema-photography history. The farm specializes in dairy, fruit and grain farming.



104

105. ROSE NURSERY "STŪRU ROZES"

GPS 56.587457, 22.778274. Sēļi, Blīdene parish

Tel. +371 26329815. E-mail: stururozes@gmail.com

At the rose nursery "Stūru rozēs" in Blīdene parish you can see over 350 rose varieties and purchase potted rose plants. Owner Lilija Bleidele will provide advice on rose care. In July and August, visitors can see blooming roses in Lilija's spacious garden.

106. LILLAS LAVENDER

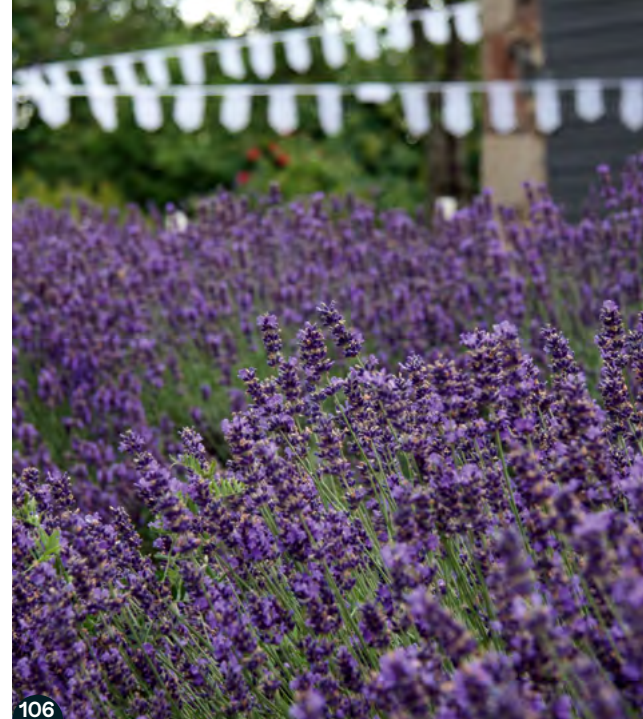
GPS 56.814364, 22.273360

"Kalnjaunsētas", Ošenieki, Jaunlutriņi parish

Tel. +371 26447888

www.lillaslavender.com

In July, visitors can see a beautiful lavender field, relax, enjoy the amazing scent of lavender and capture the magical moments in photographs. Learn about the history, growing and harvesting, oil distillation and practical use of lavender.



106

107. GUIDED TOUR ON FARM "BRŪZILU LIELLOPS" ("BRŪZILU CATTLE")

GPS 56.508978, 22.339331

Brūzilas, Kursiši parish

Tel. +371 28633520, +371 29263853

www.bruziluliellops.lv

"Brūzilu liellops" combines two farms – a dairy farm and a beef cattle farm. Several breeds are raised here. During the tour, visitors will see the pasture and livestock housing. Beef products can be purchased.

108. SOLVEIGA DZENE'S DECORATIVE GARDEN

GPS 56.674996, 22.564525

Krasta iela 14, Brocēni

Tel. +371 29255877

Solveiga Dzene's decorative garden is located by Lake Ciecere in Brocēni town. Solveiga is a professional landscape gardener and can give advice about how to choose plants and the principles of garden design.



108

109. MINI ZOO "SILAVAS"

GPS 56.731933, 22.674823

"Silavas", Remte parish

Tel. +371 28164203

The petting zoo features many different animals – donkeys, llamas, a horse, a pony, African ostriches, nutrias, chinchillas, rabbits, various birds, sheep, goats, and many more. You can also feed the animals with food supplied by the zoo, which makes the visit even more exciting. The indoor exhibit features more exotic animals – parrots, various rodents, fish, a turtle and even pythons.



109

110. FARMSTEAD "KALNA ĢĒĢERI"

GPS 56.367621, 22.682603

"Kalna Ģēģeri", Vadakste parish

Tel. +371 22487448

Several generations of the Apriķi family have been owners of this farm. Visitors can see domestic animals typical for Latvia and enjoy peaceful walks in the nearby forest and fields, take part in hay harvesting, make beeswax candles, bake bread, taste typical countryside food and spend the night in a tent.



110

Discover, taste and try – fill yourself up in Saldus municipality!



111

111. TASTING OF PEA DISHES

GPS 56.674322, 22.219243

Bērzu iela 4. Zirņi, Zirņi parish
Tel. +371 28878917

Local folklore group of Zirņi parish, "Riekstkodis", which is led by Edīte Zusmane, studies traditional culinary heritage, especially focusing on dishes made of peas, because the name of their parish means "peas" in Latvian. Visitors can taste many different types of food made with peas: soups, pancakes, sweet and savoury biscuits, pea tarts, pate, pies etc.

112. TASTING OF FRUIT WINE

GPS 56.819729, 22.547128

"Granskalni", Gaiķi parish. Tel. +371 29194894

Farm "Granskalni" grows sea buckthorn and rhubarb, produces juice and also makes fruit wine and other tasty treats. Visitors can taste and purchase delicious wine made from various fruits and berries, as well as the healthy sea buckthorn juice.

113. CRAFT BREWERY "SALDALUS"

GPS 56.652643, 22.498583. Striķu iela 65, Saldus

Tel. +371 28662967. www.saldalus.lv

"Saldalus" is one of the first and smallest Latvian breweries, which makes tasty, strong and live beer (5 types) in a traditional way. The whole process is manual and the equipment was built by the owner. Small groups can visit the brewery and enjoy a guided tour and a tasting.



112



113

114. CHILI SAUCES BY SANTA OZOLIŅA

GPS 56.840944, 22.452333

"Ābelītes", Jaunlutriņi parish. Tel. +371 26626468

Santa Ozoliņa offers small groups to taste and buy delicious and various homemade chili sauces. At the "Ābelītes" country house, you can also learn about the making of sauces, the nuances of taste, participate in a master class and try cooking them yourself.

115. SALDUS FOOD FACTORY AND MILK SWEETS "GOTIŅA"

GPS 56.663999, 22.490484. Lielā iela 9a, Saldus

Tel. +371 63881440. www.saldusgotina.lv

At Saldus Food Factory it is possible to find out how the milk sweets "Gotiņa" ("Little Cow") are made, see a film about the production process and taste them. Once you have decided, which sweets are the most delicious, you can buy them at the factory shop. Saldus Food Factory offers various types of milk sweets, fudge, creams and also natural fruit jelly candy.

116. HOMEMADE ICE-CREAM

GPS 56.683896, 22.330019

"Brekši", Zirņi parish. Tel. +371 29245117

At the vacation cottage "Brekši" it is possible for groups to taste various flavours of homemade ice cream and honey ice cream. Tastings are available for groups of 20 or more people and only in the summer. The owner Vīneta Stepiņa also offers catering services. There is a nice place for a picnic near the water. The ice-cream can also be purchased and tasted at the café "Ziemelis" in Saldus.

117. APIARY "KĀRES"

GPS 56.640317, 22.691223. "Kāres", Blīdene parish

Tel. +371 29497903, +371 28647973. www.meduspils.lv

When visiting beekeeper Jānis Vainovskis in Blīdene parish, you will learn a lot about bees and honey. In the summer, you can take a tour in the apiary dressed in a bee-keeping suit, try uncapping honeycomb and extracting honey; in winter – participate in creative workshops and make beeswax candles or sweets. Visitors can also taste various types of honey, pollen and bee bread. Families and tourist groups are welcome, and a picnic area is available.



114



115



116



117

Sweets and Tastings

For School Trips and Tourist Groups



118

118. "LEARN AT THE MUSEUM"

GPS 56.66307, 22.496571. *Striķu iela 22, Saldus*
Tel. +371 29357343. muzejs.saldus.lv

The classes at J. Rozentāls' Saldus History and Art Museum will let students discover art and history in a suitable, exciting and interactive way. The museum offers more than 10 different classes tailored to various age groups, interests and topics.

119. ACTIVITIES AT OSKARS KALPAKS' MUSEUM

GPS 56.67833, 22.15538
Airītes", Zirņi parish
Tel. +371 22017465, karamuzejs.lv

Oskars Kalpak's museum offers several exciting activities for pupil groups on school trips. Educational and active classes for various class groups take place both in the museum premises and outdoors - in the surrounding territory. The museum also offers field trips following the footsteps of the 1st Latvian Independent Battalion in Saldus and Kuldīga municipality. In 2024 the Civic Education and Historical Understanding Center was opened here. It offers to get to know much broader areas through interactive content - the cultural history, architecture, material culture and public life of our country. The numerous activities available here can be adapted to different age groups. There is a nature - activity trail next to the museum, as well as a picnic area and campfire site.

120. KAPELLERS' HOUSE

GPS 56.665003, 22.494586
Striķu iela 7, Saldus. Tel. +371 26567726

Tourist and pupil groups can participate in various creative workshops and activities. Everyone is welcome to play the board game "Discover Saldus" - to make it more fun, you can choose the giant floor version. The workshop of ceramicist Dita Zagorska is located in the basement.

121. ADVENTURES OF LITTLE JUKUMS IN JAUNMUIŽA

GPS 56.829720, 22.403894
Jaunlutriņi parish. Tel. +371 29115267

Excursion for schoolchildren dedicated to the memory of Jukums Vācietis, commander of Latvian Riflemen, who was born in Jaunlutriņi. After learning about his childhood, school years and youth, younger schoolchildren can play games little Jukums played as a child - walking on wooden stilts, identifying trees by their leaves, making dolls and playing a team game of throwing and hitting a wooden disc.

122. ACTIVITIES AT "KRUSTKALNI" RECREATION CENTRE

GPS 56.642494, 22.422874
"Krustkalni", Novadnieki parish. Tel. +371 22120747
www.krustkalni.lv

Recreation centre "Krustkalni" offers a variety of educational, creative, sporting and team building activities for groups of tourists and schoolchildren.

123. MOBILE GAME "PALM-SIZED SILDUS"

Tel. +371 63807443
spelesaldus.lv; map and instructions: turisms.saldus.lv

This mobile game is a great way to explore Saldus and make sightseeing in the town more exciting. By visiting several places of interest in the centre of Saldus town and answering questions or completing tasks, you will find out about the history of Saldus, notable people and learn fun and interesting facts.



124. CLASSES AND ACTIVITIES AT JAUNAUC MANOR

GPS 56.444226, 22.690027. *Jaunaucē parish*
Tel. +371 26014296
www.jaunaucespils.lv

Jaunaucē manor has a wide variety of educational tours and historical activities for large and small groups of tourists and schoolchildren. Their topics range from the daily life of the gentry to schooling during the Soviet period. A special lesson gives insight into the restoration of the manor house. Groups can also play croquet and tennis in the manor park. The latest addition to the range of activities is an escape game - to escape from the house of the estate manager, you will need to complete 10 entertaining challenges.

125. BOAT TOUR ON LAKE CIECERE

GPS 56.68692, 22.56121. *Brocēni*
Tel. +371 26858777

Leisure boat "Zezer" offers tours on lake Ciecere in the summer season. During the tour, you will find out many interesting facts about the lake, the history of the area and Brocēni town. Audio guide is available in Latvian, Lithuanian, Russian and English. The boat dock is located down the steps from the parking area by the A9 road.

126. VISIT TO THE HUNTERS' HOUSE

GPS 56.605679, 22.335400
Rozītes, Novadnieki parish. Tel. +371 29285403

The hunters' house offers pupil and tourist groups a place to stop and have a rest during trips or hikes during the summer. Possibility to have hot tea and learn about hunting.

127. GAME "DECODE SILDUS"

Saldus. Tel. +371 29443117

The game is intended for classes, families and groups of friends. "Decode Saldus" is a exciting activity - during it participants get to know places in the city center that usually go unnoticed. Prior arrangement required.

128. ADVENTURES AT THE VIKING SETTLEMENT

GPS 56.738170, 22.425797
Lutriņi parish
Tel. +371 26268883, +371 25423324

The organization "Wirsaitis" provides a possibility for young people to spend time in nature, at a settlement in the forest, and to learn basic survival skills, for example, to start a campfire, shoot a bow or an air gun, and to throw an axe in a specially built area. Camping in the forest is also possible. They offer various creative workshops - leather braiding, making beeswax candles or torches. Children can play sack fight or other outdoor games. There is a picnic area with a campfire site.

129. VISITING THE KALNU CULTURE HOUSE

GPS 56.444409, 22.125384
Kalni, Nīgrande parish. Tel. +371 25621005

In Kalni, Nīgrande parish, you can visit one of the largest rural culture houses in Latvia - Kalnu Culture House. During the tour you will learn more about the construction and functions of the building, see the spacious audience hall and the rotating stage. The bravest will be able to climb onto the roof of the building. It offers a picturesque view in any season.

GUIDED TOURS FOR GROUPS

VINETA JUREVICA (LV, RU, ENG, tel. +371 26177794) offers tours in Saldus town and municipality. Orienteering activities at Ciecere nature trail and in Kalnsētas park for all age groups.

LĪGA ŠAULE (LV, RU, tel. +371 29443117) offers tours in Saldus town, including a special tour dedicated to artist Janis Rozentāls, and exciting activities for schoolchildren.



128





131

130. SALDUS SPORTS COMPLEX

GPS 56.667959, 22.498868

Jelgavas iela 6, Saldus. Tel. +371 63824938

Saldus sports complex has a gym, a weight training room, an aerobics hall, a squash court, two sports halls and a running track. There are tennis courts, a stadium, a football field, 3 beach volleyball courts, a streetball court, and a gymnastics area.

131. SALDUS OUTDOOR SKATEPARK

GPS 56.667633, 22.497998. Jelgavas iela 6, Saldus

Saldus alternative sports complex includes a spacious 800 m² wooden skatepark, a concrete skatepark covering 450 m², and there is also a 250 m² asphalt pumptrack.

132. SALDUS INDOOR SKATEPARK

GPS 56.672996, 22.493318

Slimnīcas iela 3, Saldus. Tel. +371 29698698

The indoor skatepark is small, but fast and technical. Suitable for skateboarding, scooters and BMX.

133. SALDUS BMX TRACK

Zirņi parish, at the border of Saldus town (end of Brīvības street). Tel. +371 29372775

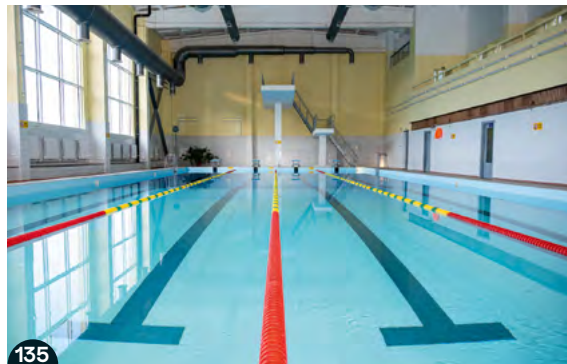
The modern BMX track is a great place to spend time outdoors and improve your cycling skills. The track can be used by prior arrangement and in appropriate weather conditions. Safety equipment must be worn when using the track.

134. MRS DIRT PARK

GPS 56.651585, 22.463828

Mežvidi, Novadnieki parish. Tel. +371 20177227

One of the first and largest dirt tracks in Latvia, where the legendary yearly competition "MRS krūmu gonka" ("MRS bush racing") takes place. There is a smaller track for children. It is recommended to arrange your visit in advance.



135

135. SALDUS INDOOR SWIMMING POOL

GPS 56.666339, 22.513614

Kalnsetas iela 32, Saldus. Tel. +371 63824938

The 25m swimming pool with 4 lanes also features a sauna and a separate swimming pool for children.

136. CHILDREN'S PLAYGROUND "PĪĻUKS" ("DUCKLING")

GPS 56.664985, 22.490823

Saldus (between Lielā Street and the Ciecere River)

You will reach the playground, when walking along the Ciecere nature trail. It is suitable for children of various ages. There is a separate play area for younger children up to three years old, but the main play area is for older children and teenagers and has a zip line.

137. INDOOR PLAY CENTRE "HAPPY KIDS"

GPS 56.683223, 22.475155

Apvedceļš 7C, Saldus. Tel. +371 27015102

The largest indoor play centre in Kurzeme features a spacious indoor playground with a ball pit and slides, and a toddler play area. Laser tag is available by prior arrangement. A great place for family celebrations. The building also houses a casual dining restaurant, which offers catering for functions.

138. MINIGOLF, PEDAL CARTS AND ATTRACTIONS

GPS 56.667429, 22.501012

Jelgavas iela 6, Saldus. Tel. +371 29412309

There is a play area next to the stadium of Saldus sports complex, which features a minigolf course with 18 holes, pedal carts and various games and attractions for children. Open in the summer, free entrance.

139. FOREST TRAILS

GPS 56.648849, 22.486842

Near Meža street, Saldus. Tel. +371 29455360

There are several trails for running, Nordic walking and skiing. The trails start at the intersection of Meža and Irbenieku Streets. There is also a picnic area.



139

140. AIRSOFT SALDUS

GPS 56.683452, 22.457959. Tel. +371 20165777

The active recreation centre offers public and private airsoft games, target shooting and quad bike rides for adventure lovers. A great place for both private events and exciting team building games.

141. ZVĀRDE SHOOTING RANGE

GPS 56.595861, 22.549947. "Lapsas", Zvārde parish
Tel. +371 28338705; zvardessautuve.com

Everyone is welcome to test their shooting skills. Guns are available for rent, and there are target stands "running deer" and "running wild boar". Shooting at flying targets is available. Visits must be booked in advance.

142. MUSICAL TRAIL IN BLĪDENE

GPS 56.649290, 22.796821. Blīdene, Blīdene parish

In the park in the village centre there is a trail with five musical stops featuring different musical elements. The trail includes Rainbow drums, xylophones, "Bell Lyre", and tubular bells. The musical stations allow visitors to enjoy outdoor activities and encourage explorative, imaginative play.

143. BROČĒNI ICE HALL

GPS 56.684552, 22.562766

Ezera iela 1, Brocēni. ledushalle.saldus.lv

Tel. +371 26175514, +371 25780907 (ice rink).

The sports centre features a basketball hall, a volleyball hall, a gym, a football field and an indoor ice rink, available for public ice-skating sessions and offering skate rental.

144. BROČĒNI ROPES COURSES

GPS 56.669262, 22.564266. Brocēni

There is a rope course available in Brocēni forest park with more than 20 sections of varying difficulty. It is located at a low height, approximately 1 meter, and is accessible to everyone at any time.

145. BROČĒNI SKATEPARK

GPS 56.678476, 22.564789. Brocēni

There is a wooden skatepark (9m x 22m) near the public beach in Brocēni. It is suitable for roller-skating, scootering, skateboarding and BMX.

146. NATURE – ACTIVITIES TRAIL AT O. KALPAKS' MUSEUM

GPS 56.678284, 22.155801. "Airītes", Zirņi parish

A nature trail with wooden carvings and a small ropes course are located in the park next to the museum and are suitable for young adventure-seekers.

147. OUTDOOR CLIMBING WALL

GPS 56.66837, 22.50108. Jelgavas iela 6, Saldus

An outdoor climbing wall is located at the Saldus Sports Complex stadium. It has 5 paths with top/bottom protection. The wall is available from May to October, bringing your own equipment.

148. INDOOR CLIMBING WALL

GPS 56.649744, 22.466478. "Mežvidi", Novadnieki

parish. Tel. +371 29163386, +371 29215457

Indoor rock climbing is offered by the Association for Development of Novadnieki. All the necessary equipment is provided, and a skilled instructor is available.

149. ARCHERY RANGE

GPS 56.604097, 22.330848. "Viesturi", Novadnieki

parish. Tel. +371 26536043

Visitors have the opportunity to learn archery basics and test their skills on an archery course with target stands and 3D targets. 10 bows are available.

150. BICYCLE RENTAL AT SALDUS TOURISM INFORMATION CENTER AND BROČĒNI TOURISM INFORMATION POINT

GPS 56.665607, 22.493857; GPS 56.682274,

22.566339. Striķu iela 3, Saldus. Tel. +371 63807443

Lielcieceres iela 3, Brocēni. Tel. +371 22777103

Saldus TIC has 4 modern electric bicycles available for rent, Brocēni TIP - 2 city bicycles and 2 electric bicycles.

151. CYCLING ROUTE NO. 590. "AROUND LAKE CIECERE"

GPS 56.686566, 22.561842. turisms.saldus.lv

The 27 km long cycling route takes around the picturesque Ciecere Lake. Route is circular, mostly gravel-surfaced with an asphalt section in the town of Brocēni. On the way, be sure to stop and climb the observation tower of Lake Ciecere, catch your breath in the Brocēni Forest Park and swim in Lake Ciecere!

152. HORSE FARM "PRELŪDIJA"

GPS 56.642564, 22.386719. Kārļa iela 14, Sesīle,

Novadnieki pag. Tel. +371 29723632

Horse riding for adults and children, riding lessons.

**Recreation by
the Water and
Water Tourism
Equipment**



157

153. SALDUS LAKE BEACH

GPS 56.672127, 22.506993. Saldus town

The beach has a changing cabin, wc, a children's playground, 2 beach volleyball courts, a pier, a boat ramp, a separate beach for children, and a floating enclosure for swimming lessons.

154. LAKE CIECERE BEACH IN BROCĒNI

GPS 56.67864, 22.56367. Brocēni

Public beach equipped with a floating dock creating a swimming area barrier, a changing cabin, toilets, a children's playground, beach volleyball courts and outdoor fitness equipment.

155. RECREATION AREA BY THE LAKE CIECERE OBSERVATION TOWER

GPS 56.656433, 22.554632. "Saulrieti", Ciecere parish

Popular place for swimming with a floating dock and a picnic area by the tower.

156. RECREATION AREA BY THE SĀTIŅI-SESILE WATER RESERVOIR

GPS 56.641596, 22.431803. Novadnieki parish

Popular place for swimming offering a changing cabin, WC, and a picnic area with a campfire site.

157. "WAKEPARK SALDUS"

GPS 56.641957, 22.428267

Sātiņi-Sesile water reservoir, Novadnieki parish
Tel. +371 20332477

180 m long cable with obstacles, suitable for all levels. Equipment rental and instructor available. Rental of 2 rowing boats with electric motors and SUP boards.



153

158. "ALATE"

GPS 56.67545, 22.34118

"Adleri", Zirņi parish. Tel. +371 29422884

4 boats, 6 SUP boards, 2 pedal boats and an outdoor jacuzzi are available for rent by the Pakuļi water reservoir. Delivery to a different location is also possible.

159. CAMPSITE "IEVAS"

GPS 56.462929, 22.114354. "Ievas", Kalni, Nīgrande parish. Tel. +371 29341073, +371 29412804

Canoe rental, transport to the chosen location. Tent sites and sports fields.

160. RECREATION CENTRE "KRUSTKALNI"

GPS 56.64264, 22.42313. Novadnieki parish
Tel. +371 29457794, www.krustkalni.lv

Rental of 6 rowing boats and a SUP board on Sātiņi-Sesile water reservoir.

161. "CIECERES ŪDENSROZES"

GPS 56.674996, 22.564525

Krasta iela 14, Brocēni. Tel. +371 29255877

Recreational water equipment rental – a rowing boat, SUP boards, a pedal boat, inflatable water walking ball, and also activities like motor boat rides, water skiing, and inflatable tube rides on Lake Ciecere.

162. "KRASTA PUSE"

GPS 56.67645, 22.5648. Krasta iela 6, Brocēni

Tel. +371 22524990; e-mail: krastapuse@gmail.com

Water equipment rental on Lake Ciecere offering eight SUP boards (the set includes a combination paddle, a life jacket, a seat, a waterproof bag and a pump), two 2.5-seater kayaks (suitable for two adults and one child) and one fishing kayak.

Other recreational equipment rental: garden games 3 x 3 m (Circus, Ludo), a novus table and a BBQ grill. Life jackets, waterproof storage bags and 12V compressors can be rented separately.

163. "SPORTIVE AQUA"

GPS 56.678955, 22.562285. Next to the public beach

in Brocēni. Tel. +371 24227242; E-mail: info@sportive.lv
www.sportive.lv

The largest inflatable water park in Kurzeme region is located on Lake Ciecere. With over 30 obstacles, this 4000 m² large floating water park will test your strength and coordination skills in the most fun and challenging way possible. Children must be 6 years old and above to visit the water park.

164. GUEST HOUSE "RADI"

GPS 56.64198, 22.56547

Ciecere parish. Tel. +371 29538230

Rowing boat and canoe rental, motor boat rides, inflatable tube rides, water skiing and wakeboarding.

165. RECREATION CENTRE "ZVEJNIEKI"

GPS 56.64596, 22.56533. Ciecere parish

Tel. +371 29715001, +371 29550012

www.zvejnieki2000.lv

Rowing boat and pedal boat rental on Lake Ciecere.

166. "BROCĒNU SUP" / "SAL SUP"

Tel. +371 27717255, +371 26665671

Rental of 8 SUP boards in Saldus municipality.

167. CAMPSITE "PRIEDAIŠI"

GPS 56.61653, 22.55705

Novadnieki parish. Tel. +371 29331179

Rental of 2 rowing boats and 2 SUP boards on Lake Ciecere.

168. "DESMIT LAIVAS" ("TEN BOATS")

Tel. +371 28338705

Canoe rental (10 canoes) in Saldus municipality and Western Latvia.

169. ROWING CENTRE IN BROCĒNI

GPS 56.682957, 22.561185

Ezera iela 4A, Brocēni. Tel. +371 29324304

Emergency boat repairs, temporary storage of boating equipment, lockers.



155



163



166

170. CAFÉ "MEŽAVĒJŠ"

GPS 56.67122, 22.36344. Zirņi parish. Tel. +371 26340848

Rental of two boats for rides on the Ciecere River and Pakuļi water reservoir. A packed picnic basket can be ordered for your boating trip.

Catering



RESTAURANT "STIKLA PĒRLĪŠU SPĒLE"



CAFÉ "KĒĶĪS"



CAFÉ "HOT CAFE"



CAFÉ "ZIEMELIS"



CASUAL DINING RESTAURANT "EAT & CHILL"

In Saldus

FAMILY RESTAURANT

"LAIMES MIRKLIS"

Rīgas iela 8, Saldus
Tel. +371 20601990
60 seats

CAFÉ "TERASE"

Striķu iela 2a, Saldus
Tel. +371 25765000
40 seats

GASTROBAR "TRĪS BRĀĻI"

Lielā iela 3, Saldus
Tel. +371 260716172
40 seats

RESTAURANT "STIKLA PĒRLĪŠU SPĒLE"

Rīgas iela 10a, Saldus
+371 63881596
35 seats

CAFÉ "BARON'S"

Lielā iela 3b, Saldus
+371 26388478
32 seats

CAFÉ "MAGDALĒNA"

Lielā iela 23a, Saldus
+371 29429993,
+371 20218606
30 seats

PIZZERIA "STENDER'S PICA"

Jelgavas iela 1, Saldus
+371 63823763
36 seats

CAFÉ "PIETURA"

Jelgavas iela 2, Saldus
+371 29424252
13 seats

CAFÉ "MX3"

Rīgas iela 1, Saldus
+371 63823736
20 seats

CAFÉ "KĒĶĪS"

Jelgavas iela 1, Saldus
+371 20035181
40 seats, kids play space

CAFÉ "ZIEMELIS"

Kuldīgas iela 21, Saldus
+371 29157020
48 seats (up to 100 in summer)

CAFÉ "HOT CAFE"

Jelgavas iela 6, Saldus
+371 27776636
65 seats

CASUAL DINING

RESTAURANT "EAT & CHILL"

Apvedceļš 7C, Saldus
+371 29635900
40 seats, functions for up to
120 people

BAKERY-CAFÉ "MIKO"

Striķu iela 12, Saldus
+371 63881677
15 seats

BAKERY "ENHARS"

Striķu iela 10c, Saldus
+371 67220329
14 seats

PASTRY SHOP "SALDUS GOTIŅA"

Kuldīgas iela 1
(Saldus market.)
+371 20601888
4 seats

BAKERY "AZAIDS"

Lielā iela 9a, Saldus
+371 63881444
8 seats

CANTEEN "MX1"

Rīgas iela 1, Saldus
+371 63823736
80 seats

CANTEEN "PAVALGS"

Kuldīgas iela 3, Saldus
+371 63822712
100 seats

GASTROBAR "VELVE"

Striķu iela 7, Saldus
+371 23471869
22 seats

SUMMER CAFÉ "BUNGALO"

Saldus Lake beach,
Pludmales iela
+371 29871017
Only in summer
36 seats

HESBURGER SALDUS

Apvedceļš 5, Saldus
+371 29402175
40 seats

SALDUS KEBABS

Kuldīgas iela 4-6, Saldus
+371 25550161
12 seats

COFFEE SHOP "TASE"

Lielā iela 2, Saldus
(entrance from O. Kalpaks'
Square)
+371 28718799
6 seats

In Saldus Municipality

CAFÉ "BORDERTAUNA"

"Rožēžas", Novadnieki parish
+371 63881361
45 seats

CANTEEN "VILKĀBELES"

"Mežvidi", Novadnieki parish
+371 20228181
60 seats

CANTEEN "PŪPĒDIS"

Kaļķu iela 3, Novadnieki parish
+371 29139641. 36 seats
Functions for up to 80 people

CAFÉ "SAULES RATS"

Dīķa iela 1, Druva, Saldus parish
+371 27509494
120 seats

CAFÉ "PIE KRISTIĀNAS"

Ezera iela 1, Brocēni
+371 22583040
80 seats

CAFÉ "BIRZTALIŅA"

Skolas iela 17A, Brocēni
+371 29609550
30 seats

CANTEEN "EZERKRASTI"

Krasta iela 21A, Ezere
+371 28279377
20 seats

CATERING COMPANY "AVANGARDE"

Centra iela 5, Ezere, Ezere parish
+371 29438865
By prior arrangement

CATERING IN JAUNLUTRIŅI

Muižas iela 1, Jaunlutriņi
+371 29115267

RECREATION SITE "IEVAS"

"Ievas", Nīgrande parish
+371 29341073
60 seats on summer terrace,
off-site catering.
By prior arrangement.

CAFÉ "MEŽAVĒJŠ"

Zirņi parish, 109th km of
Rīga-Liepāja road
+371 63846072,
+371 29450176
80 seats



CAFÉ "BORDERTAUNA"



RECREATION SITE "IEVAS"



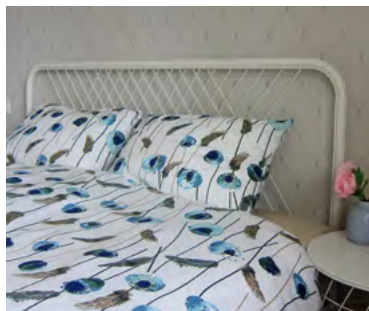
CAFÉ "MEŽAVĒJŠ"



HOTEL "DEMIANS"
GPS 56.664451, 22.494664
Rīgas iela 10a, Saldus
Tel. +371 63881596, +371 29124422
hotel.demians@gmail.com



HOTEL "MANS NAMS"
GPS 56.662862, 22.491725
Lielā iela 10, Saldus
Tel. +371 29298970
hotel@elizabethotel.lv



APARTMENT "ANNA"
56.661277, 22.499822
J. Rozentāla iela 15-32
Saldus. Tel. +371 26135496
lusebaiba@gmail.com



APARTMENT IN THE TOWN CENTRE
GPS 56.665708, 22.492380
Lielā iela 2, Saldus
Tel. +371 26174135
marastolere@gmail.com



APARTMENT "PAULA"
GPS 56.667482, 22.511974
Kalnsētas iela 12-10,
Saldus. Tel. +371 26135496
lusebaiba@gmail.com



**APARTMENT HOTEL
"SAULES IELA 2A"**
GPS 56.663006, 22.486254
Saules iela 2A, Saldus
Tel. +371 24002400; +371 29161237
2400@inbox.lv



APARTMENTS AT DĀRZA STREET 13
GPS 56.658343, 22.480967
Dārza iela 13, Saldus
Tel. +37124002400, +37129161237
2400@inbox.lv



ACCOMMODATION "DIVAS ISTABAS"
GPS 56.660625, 22.486355
Skrundas iela 23, Saldus
Tel. +371 23778836
evijadarvina@inbox.lv



HOSTEL "RENČI"
GPS 56.659338, 22.475933
Dzirnavu iela 8, Saldus
Tel. +371 29237987
amberprojects16@gmail.com



ROZENSTEIN DESIGN APARTMENT
GPS 56.683054, 22.566338
Lielcieceres iela 1-7, Brocēni
+371 26469111
rozensteinapartment@gmail.com
rozenstein.lv



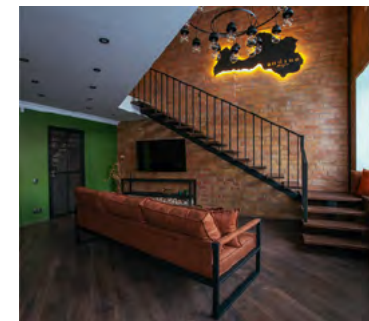
LAIPA SPA APARTMENT
GPS 56.676678, 22.569223
Lielcieceres iela 25, Brocēni
Tel. +371 29782124, info@laipaspa.lv



LEGEND	
Tent Sites	400
Toilet	WC
Swimming Area	🏊
Sports Fields	🏈
Television	TV
Pets Allowed	🐕
Luggage Storage	🧳



ROZENSTEIN DESIGN RESIDENCE
GPS 56.682749, 22.564584
Skolas iela 3-1, Brocēni
+371 26469111
rozensteinapartment@gmail.com
rozenstein.lv



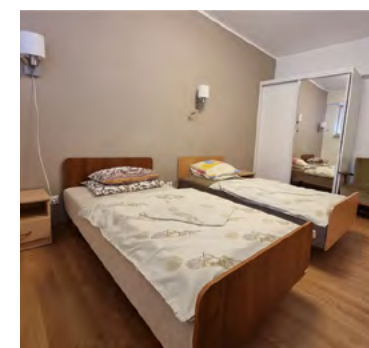
APARTMENT "ANDANO LOFT"
GPS 56.675749, 22.569389
Lielcieceres iela 29-63, Brocēni
Tel. +371 29900656
andano.designs@gmail.com



Number of Beds	148
Number of Caravan Sites	4
Shower	🚿
Boat Rental	🚤
Playground for Children	👶
Banquet / Conference	👥
Facilities Suitable for People with Disabilities	♿
Distance from Saldus Town (km)	36 KM



APARTMENT "KATRĪNA"
GPS 56.680744, 22.569770
Skolas iela 14-8, Brocēni
Tel. +371 26628551
apartamentikatrina@inbox.lv



**ACCOMMODATION OF BROCĒNI
SPORTS CENTRE**
GPS 56.684397, 22.562554
Ezera iela 1, Brocēni
Tel. +371 26175514, +371 28790545



Number of Rooms	33
Number of Cottages	4
Catering	🍽️
Sauna	♨️
Fishing	🐟
Internet (Wi-Fi)	📶
Parking	P
Credit Cards Accepted	💳



GUEST HOUSE "SAULES RATS"
GPS 56.69488, 22.44456. Diķa iela 1, Druva, Saldus parish. Tel. +371 27509494. saulesrats@inbox.lv
Icons: 20 beds, 4 rooms, TV, WC, P, 5 KM



GUEST HOUSE "SIDRABI"
GPS 56.701878, 22.466913. "Sidrabi", Saldus parish. Tel. +371 29743909. druvassidrabi@inbox.lv
Icons: 20 beds, 10 rooms, TV, WC, P, 6 KM



VIESU NAMS "KAPLŪZMUIŽA"
GPS 56.608106, 22.423586
"Kaplūži", Novadnieku pag. Tālr. +371 26294366 daiva-g@inbox.lv, www.kapluzmuiza.lv
Icons: 52 beds, 19 rooms, TV, WC, P, 10 KM



GUEST HOUSE "RADI"
GPS 56.641898, 22.565604. "Radi", Ciecere parish. Tel. +371 29538230. radi@radi.lv, radi.lv
Icons: 50 beds, 3 rooms, TV, WC, P, 15 KM



RECREATION CENTRE "JUKU DZIRNAVAS"
GPS 56.864370, 22.495544
"Juku dzirnavas", Šķēde parish. Tel. +371 28666600 info@jukudzirnavas.lv, www.jukudzirnavas.lv
Icons: 148 beds, 53 rooms, TV, WC, P, 36 KM



RECREATION CENTRE "SMUKU MUIŽA"
GPS 56.729760, 22.801282
Smukas, Remte parish. Tel. +371 27338854 info@smukumuiza.lv, www.smukumuiza.lv
Icons: 150 beds, 59 rooms, TV, WC, P, 27 KM



RECREATION CENTRE "ZVEJNIEKI 2000"
GPS 56.646103, 22.565395. "Zvejnieki", Ciecere parish. Tel. +371 29715001, +371 29550012 info@zvejnieki2000.lv, zvejnieki2000.lv
Icons: 24 beds, 4 rooms, TV, WC, P, 16 KM



RECREATION CENTRE "KRUSTKALNI"
GPS 56.642494, 22.422874. "Krustkalni", Novadnieki parish. Tel. +371 29457794, +371 26786861 krustkalni.saldus@inbox.lv, www.krustkalni.lv
Icons: 9 beds, 100 rooms, TV, WC, P, 5 KM



HOLIDAY HOUSE "BREKŠI"
GPS 56.683896, 22.330019. "Brekši", Zirņi parish. Tel. +371 29245117. saldusjanis@inbox.lv
Icons: 18 beds, 7 rooms, TV, WC, P, 12 KM



GUEST HOUSE "ADLERI"
GPS 56.675367, 22.340959
"Adleri", Zirņi parish. Tel. +371 2942288
Icons: 52 beds, 7 rooms, TV, WC, P, 17 KM



HOLIDAY HOUSE "KLONI"
GPS 56.779673, 22.542681. "Kloni", Gaiķi parish. Tel. +371 29390950, staseboltika@inbox.lv
Icons: 20 beds, 2 rooms, TV, WC, P, 17 KM



HOLIDAY HOUSE "BĒRZIŠI"
GPS 56.666888, 22.430747. "Bērziši", Butnāri, Zirņi parish. berzisi@inbox.lv, www.berzisi.lv. Tel. +371 22364110
Icons: 10 beds, 3 rooms, TV, WC, P, 4 KM



HOLIDAY HOUSE "EZERDZIRNAS"
GPS 56.674602, 22.341239
"Ezerdzirnas", Zirņu parish. Tel. +371 27049623
Icons: 4 beds, 2 rooms, TV, WC, P, 13 KM



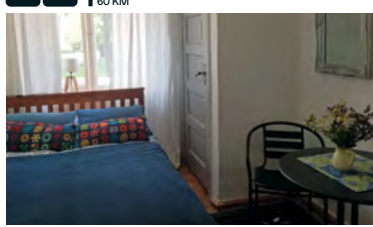
HOLIDAY HOUSE "LAŠUPE"
GPS 56.698202, 22.299960
"Cepurnieki 2004", Lutriņi parish. Tel. +371 26689060. sokolovska.krista@gmail.com
Icons: 10 beds, 2 rooms, TV, WC, P, 18 KM



HOLIDAY HOUSE "KRAUJAS"
GPS 56.481579, 22.097821
"Kraujas", Nigrande parish. Tel. +371 29104119
Icons: 10 beds, 1 room, TV, WC, P, 50 KM



COUNTRY HOUSE "BIERIŅI"
GPS 56.443041, 22.100701. "Bieriņi", Nigrande parish. Tel. +371 29449245, 29488890, delta08@inbox.lv
Icons: 10 beds, 2 rooms, TV, WC, P, 4 KM



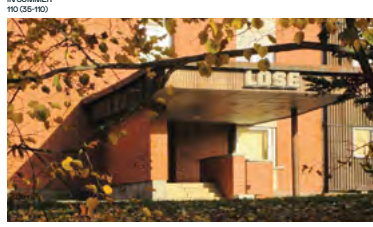
APARTMENT "AIRĪTE"
GPS 56.705738, 22.172394
Airītes stacija, Zirņi parish. Tel. +371 29503503 stumburs@gmail.com
Icons: 3 beds, 5 rooms, TV, WC, P, 21 KM



HOLIDAY HOME "LAUKU MICKAS"
GPS 56.692684, 22.201123. "Lauku Mickas", Zirņu parish. Tel. +371 25757043, +371 25757043 info@skrundaapartments.com
Icons: 4 beds, 5 rooms, TV, WC, P, 21 KM



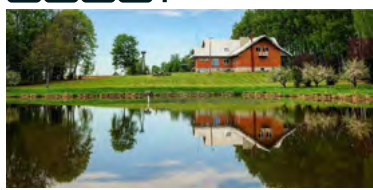
HOSTEL "DRUVA"
GPS 56.694750, 22.453561
Rozentāla iela 3, Saldus parish. Tel. +371 25708716 jm.druva@gmail.com
Icons: 35 beds, 15-37 rooms, TV, WC, P, 5 KM



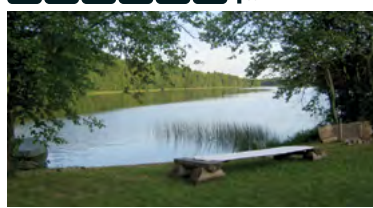
HOSTEL "LOSE"
GPS 56.444100, 22.124193
Kalnu iela 2, Kalni, Nigrande parish. Tel. +371 63842503. kalnu.vidusskola@saldus.lv
Icons: 80 beds, 40 rooms, TV, WC, P, 60 KM



HOSTEL "EZERKRASTI"
GPS 56.410542, 22.362076 Krasta iela 21A, Ezere. Tel. +371 28279377, anita.kontene@gmail.com
Icons: 16 beds, 5 rooms, TV, WC, P, 34 KM



GUEST HOUSE "KALNIEM PĀRI"
GPS 56.447701, 22.068905
Mazgrantiņi, Nigrande parish. Tel. +371 29216663 info@kalniempari.com, kalniempari.com
Icons: 20 beds, 5 rooms, TV, WC, P, 50 KM



CAMPSITE "PRIEDAĪŠI"
GPS 56.616775, 22.556343. "Priedaīši", Novadnieki parish. Tel. +371 29331179, +371 29488834
Icons: 4 beds, 1 room, TV, WC, P, 8 KM



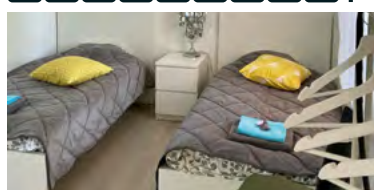
BATHHOUSE "MĀLI"
GPS 56.875373, 22.336070. "Māli", Šķēde parish. mg64@inbox.lv, Tel. +371 26539164
Icons: 7 beds, WC, P, 30 KM



BATHHOUSE "LAGZDIŅAS"
GPS 56.647232, 22.442682
Saldus iela 3, Novadnieki parish. Tel. +371 29241455
Sauna and a lounge.



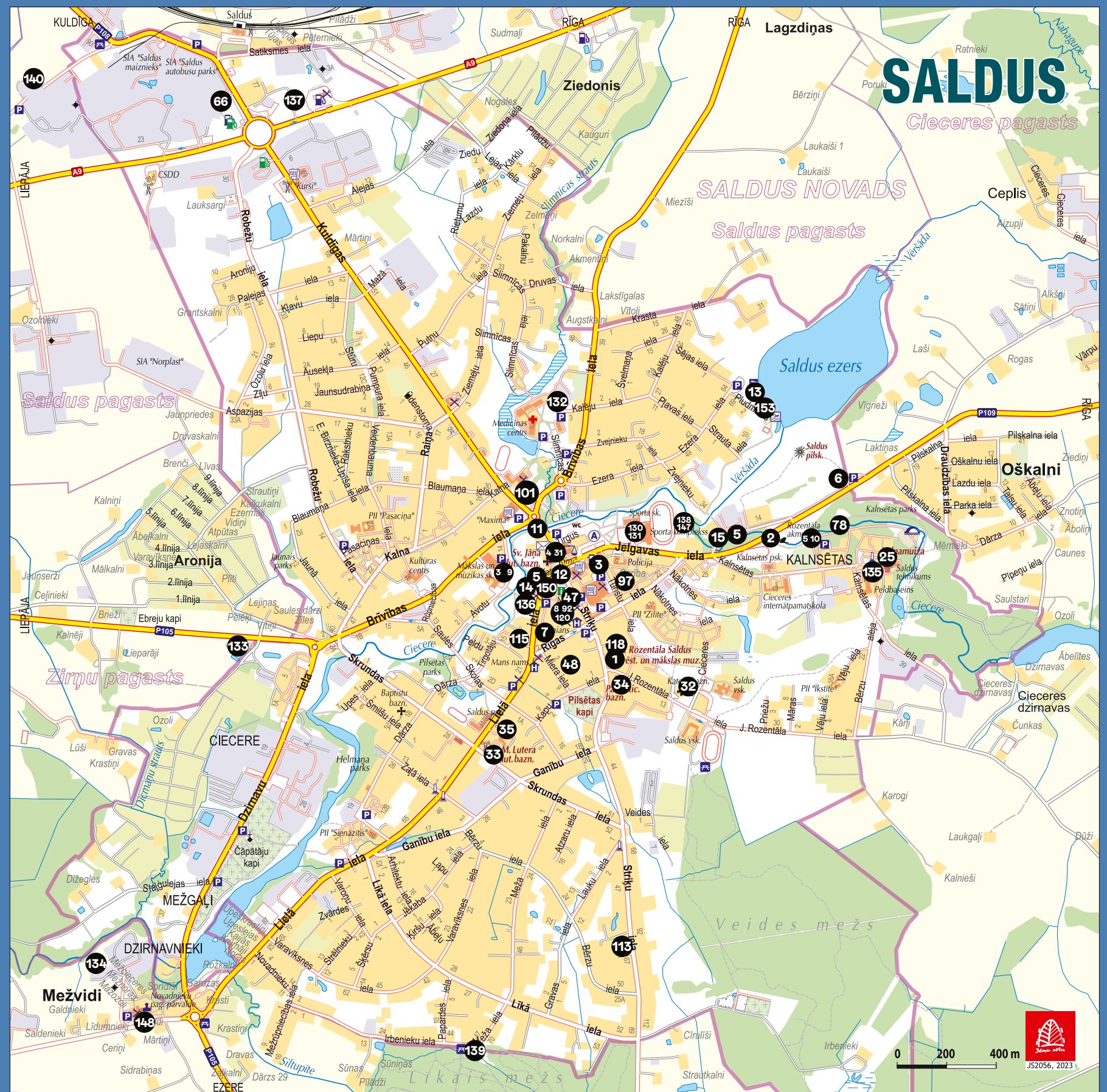
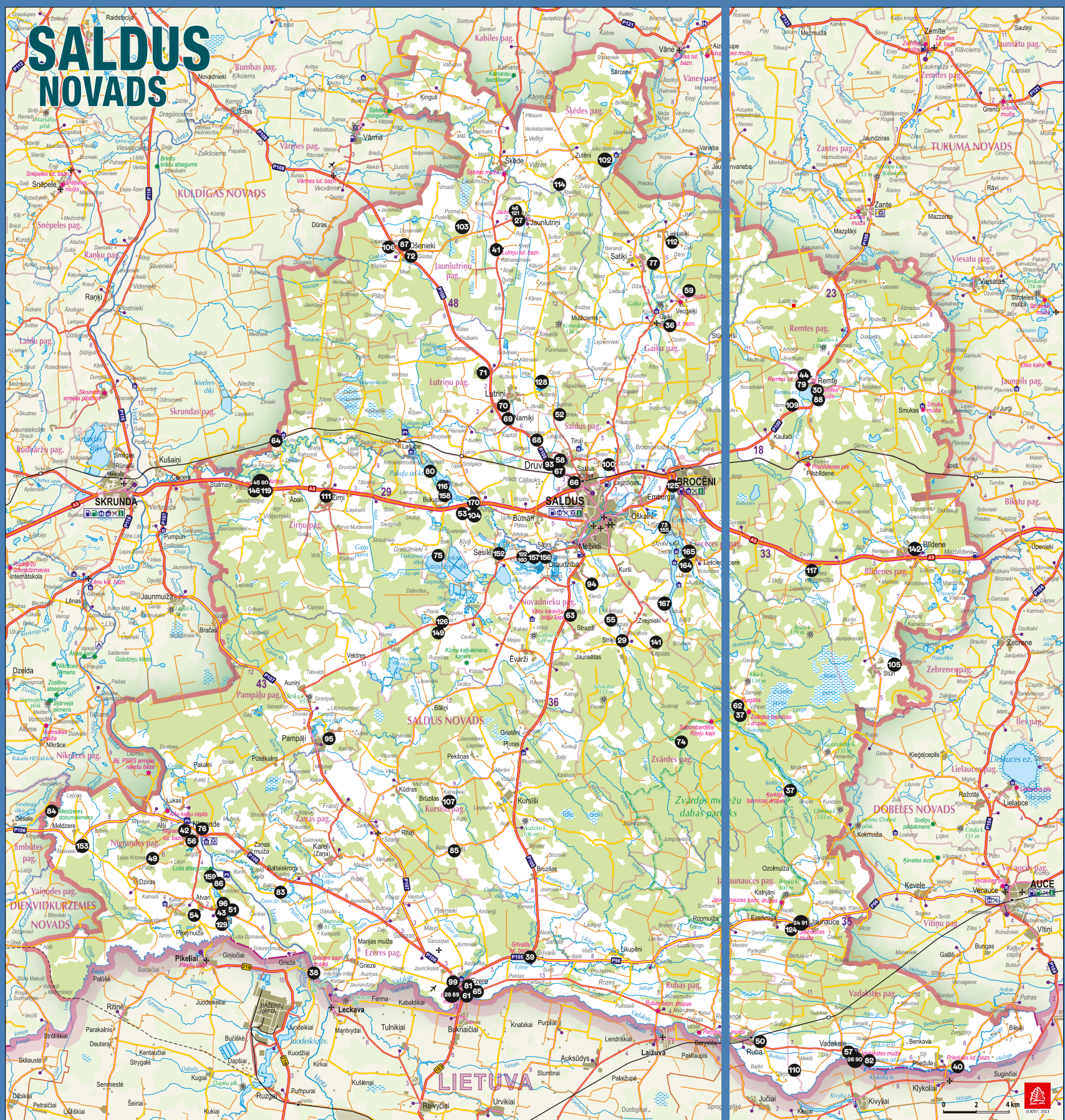
CAMPSITE "OSIŠI"
GPS 56.676312, 22.516502. "Osīši", Ciecere parish. Tel. +371 29254577 (LV, RU), +371 29877604 (LV, ENG, DE)
Icons: 20 beds, 5 rooms, TV, WC, P, 2 KM

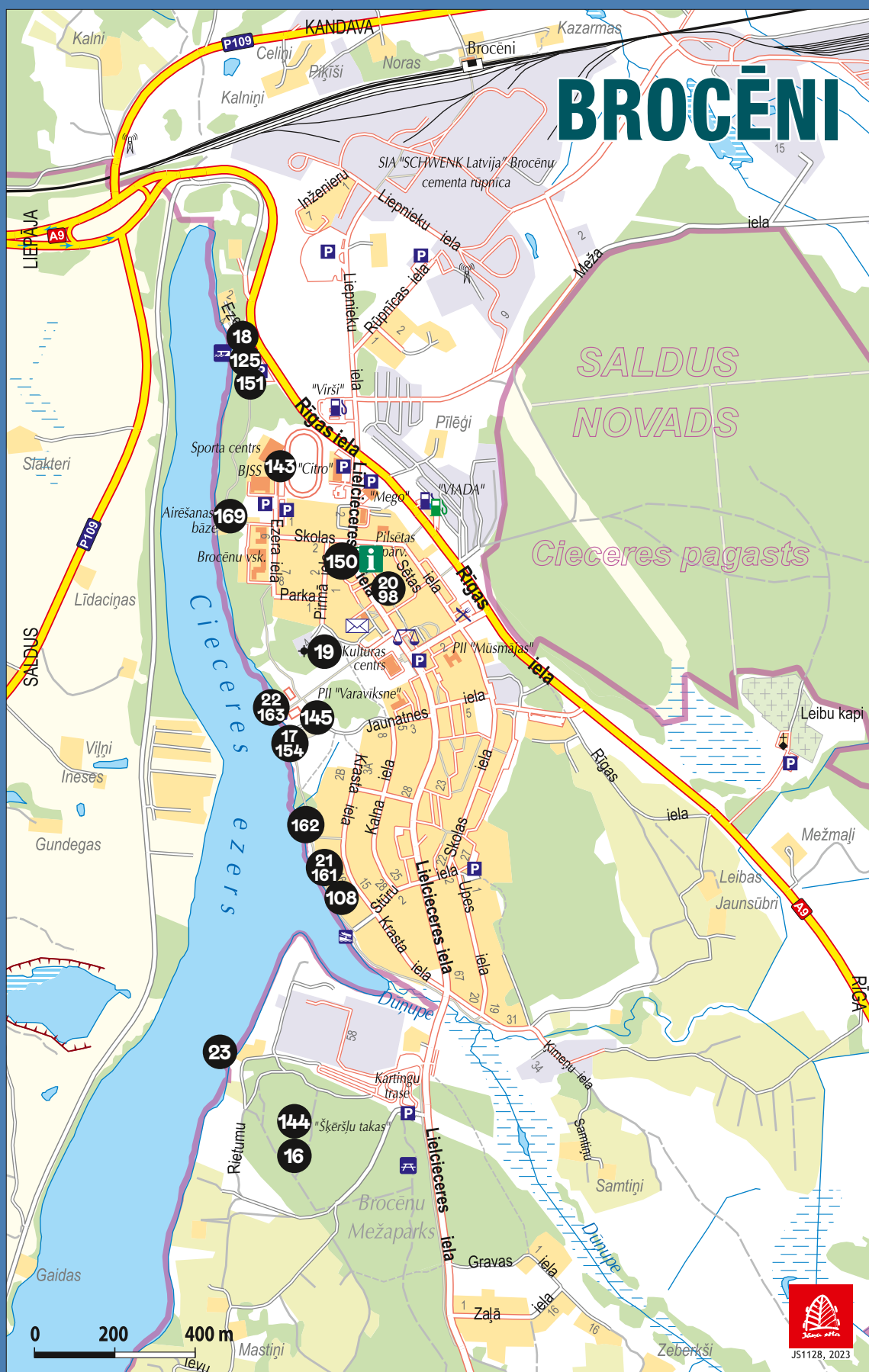


LILLAS LAVENDER KURZEME
GPS 56.814742, 22.272108. "Kalnijaunšētas, Ošenieki, Jaunlutriņi parish. Tel. +371 26447888 info@lillaslavender.com, www.lillaslavender.com
Icons: 6 beds, 3 rooms, TV, WC, P, 22 KM



CAMPSITE "IEVAS"
GPS 56.462929, 22.114354
"Ievas", Nigrande parish, Kalni. Tel. +371 29341073, +371 29412804, info@ievas.lv, ievas.lv
Icons: 26 beds, 3 rooms, TV, WC, P, 60 KM





USEFUL INFORMATION

- Saldus Bus Station. Jelgavas iela 2, Saldus. Tel. +371 63822107
- Saldus Railway Station. Satiksmes iela, Saldus. Train times and tickets: vivi.lv
- Saldus Post Office. Kuldīgas iela 4. Tel. +371 6700800
- Information: 1188, 1180, 1189
- Emergency Medical Assistance: 03, 112, 113
- Fire and Rescue Service: 01, 112
- Police: 02, 110, 112

TAXIS

Tel. +371 27503886, +371 20484454, +371 29900075, +371 24423511, +371 28266234, +371 29609920

CAR RENTAL

- SIA "AH1", Apvedceļš 10, Saldus. Tel. +371 29263715
- SIA "SVA", Car Centre, Dzirnau iela 8, Saldus. Tel. +371 63881029, +371 29247785
- SIA "MCS serviss", Kuldīgas iela 90, Saldus. Tel. +371 29266668

BICYCLE REPAIR AND ACCESSORIES

- Shop "Vinnijs". Striķu iela 12, Saldus. Tel. +371 29228666
- Shop and Workshop "BikeShop33". Tirdzniecības iela 5b, Saldus. Tel. +371 20177227
- Shop and Workshop "MIIT Velo". Skolas iela 1a, Saldus. Tel. +371 29520020

SALDUS TOURISM INFORMATION, CULTURE AND SPORTS CENTRE
 Striķu iela 3, Saldus, LV-3801. Tel. +371 63807443. tic@saldus.lv, turisms.saldus.lv

BROCĒNI TOURISM INFORMATION POINT
 Lielciēceres iela 3, Brocēni, LV-3851. Tel. +371 22777103



Publisher: Saldus Tourism Information, Culture and Sports Centre, 2025. Photos: Andrejs Sergejevs, Haralds Filjčovs, Jānis Riņķis, Ainars Mankus, archive of Saldus Tourism Information, Culture and Sports Centre, and publicity photos of tourism entrepreneurs. Maps: SIA "Karšu izdevniecība Jāņa sēta". Design: Ilze Vucēna.

